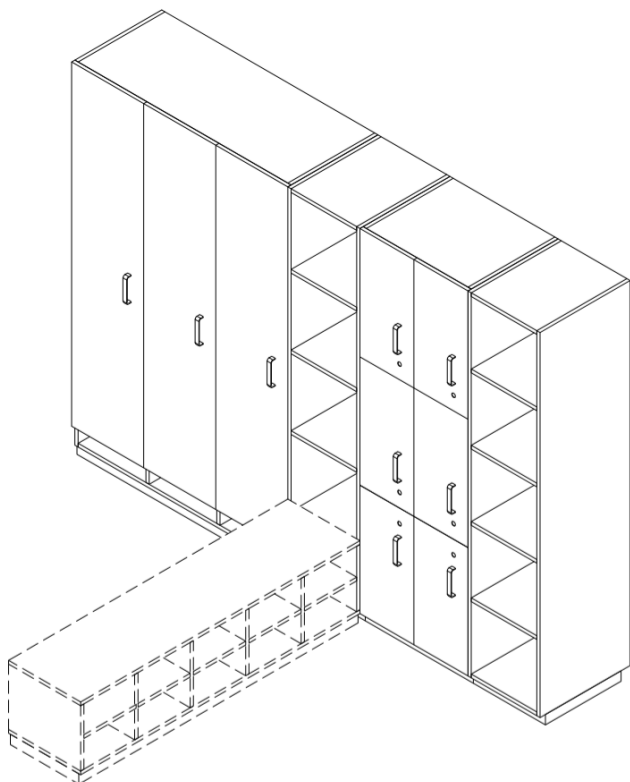


cat. no. 216.01

Personnel Airlocks

HIGH CABINETS

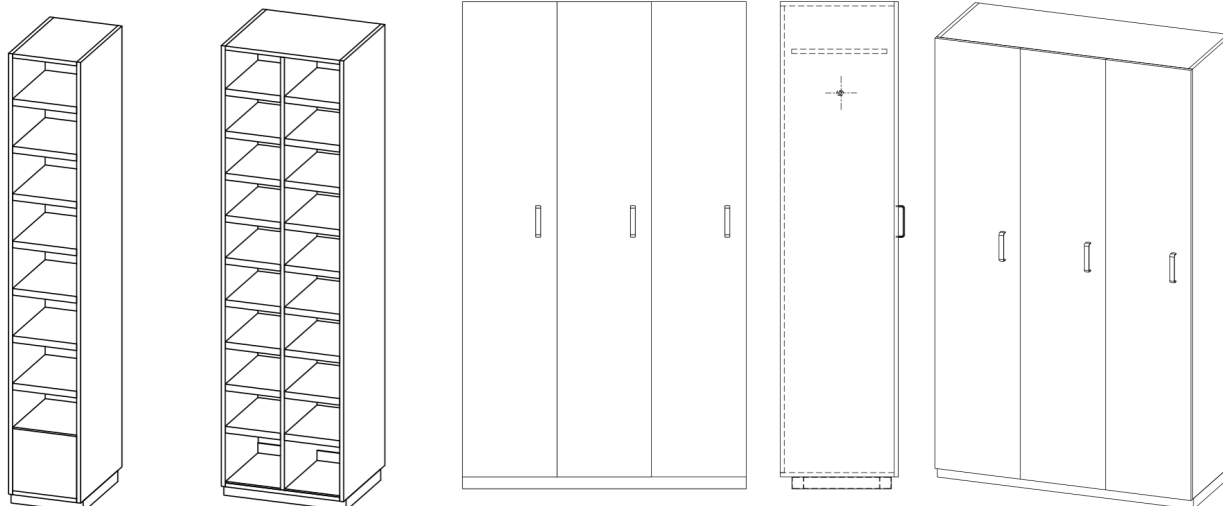




-
- Complete the range of facilities for personnel pass-through
 - The cabinet is used to store shoes, clothes, cleaning products.
 - The cabinets are mounted on the basic section-steel, with a height of 50 mm. This section is coated with flooring or treated with thermosetting powder coating RAL 9016
 - Cabinets are also offered in a version with extraction and it is possible to cover them to the ceiling.

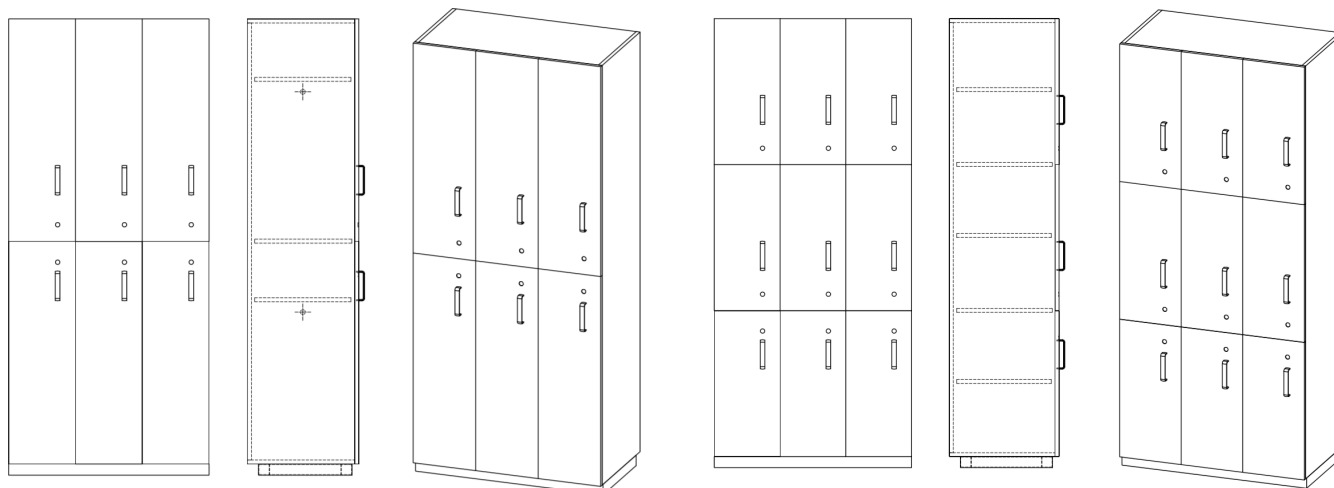
PRODUCT LIST CONTENTS:

- 01A Shoe cabinet
- 02A Boxes
- 03A Wardrobes
- 04A Cabinet with shelves
- 05A Combined cabinet
- 06A Pass-trough cabinet
- 07A Coat hanger rack cabinet
- 09A Clearing supplies cabinet

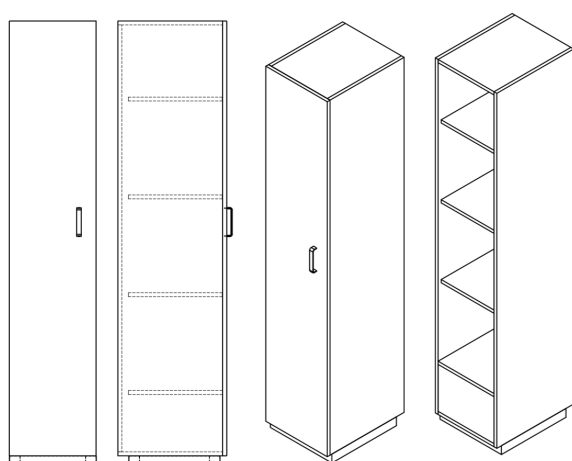


01 Shoe cabinet

03 Wardrobes

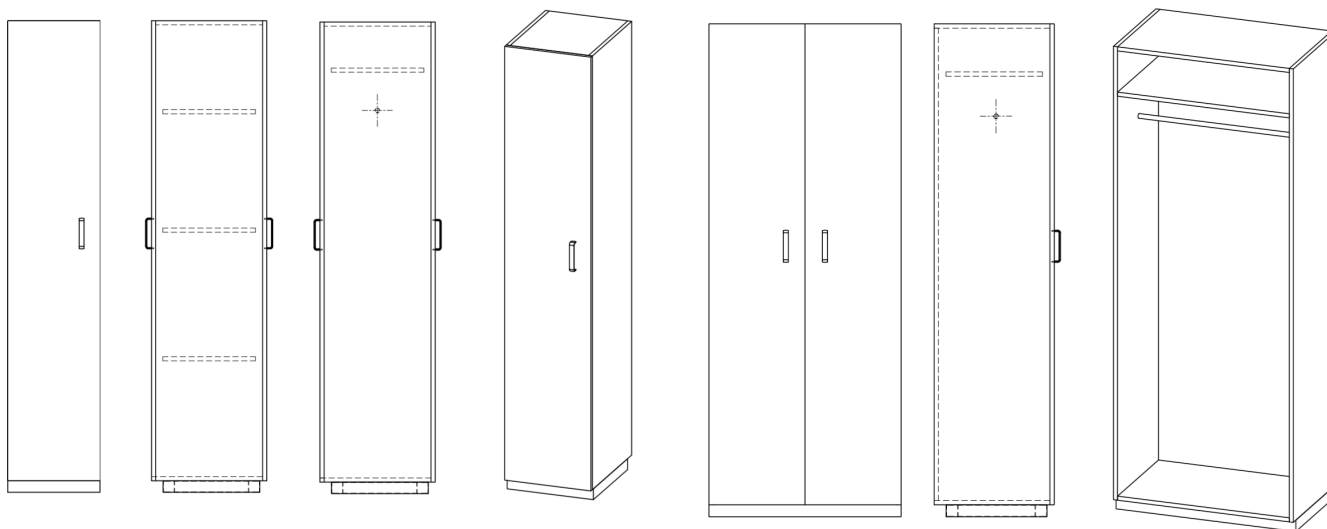


02 Boxes



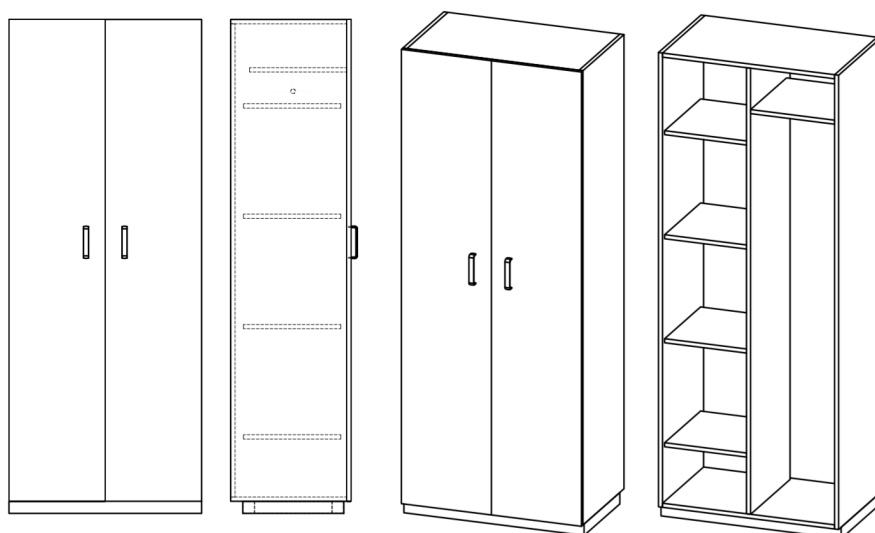
04 Cabinet with shelves

05 Combined cabinet



06 Pass-trough cabin

07 Coat hanger rack cabinet



09 Cleanig supplies cabinet

TECHNICAL DATA

Group

High cabinets

Type designation

value	width	depth
Shoe cabinets	330, 560 mm	400, 450, 500 mm
Boxes	300, 400, 600, 800, 900, 1200 mm	400, 450, 500 mm
Wardrobes	300, 400, 600, 800, 900, 1200 mm	400, 450, 500 mm
Cabinet with shelves	330, 400, 600, 800, 900 mm	400, 450, 500 mm
Combined cabinet	800, 900 mm	400, 450, 500 mm
Pass-trough cabin	300, 400, 600, 800, 900, 1200 mm	400, 450, 500 mm
Coat hanger rack cabinet	400, 600, 800, 1200 mm	400, 450, 500 mm
Cleanig supplies cabinet	300, 400, 700, 800 mm	400, 450, 500 mm

Typ - 01A Shoe cabinet

330 mm

560 mm

330 mm

560 mm

The height of the cabinet is always 2050 mm and is stated including the basic profile height of 50 mm.
The shelves for shoe cabinets are made of metal sheets, provided with powder paint RAL 9016.

Type - 02A Boxes

300 mm

400 mm

600 mm

800 mm

900 mm

1200 mm

300 mm

400 mm

600 mm

800 mm

900 mm

1200 mm

The height of the cabinet is always 2050 mm and is stated including the basic profile height of 50 mm.

Type - 03A Wardrobe

300 mm

400 mm

600 mm

800 mm

900 mm

1200 mm

The indicated height of the cabinet includes the basic profile with a height of 50 mm.

Type - 04A Cabinet with shelves

330 mm

400 mm

600 mm

800 mm

400 mm

600 mm

800 mm

The indicated height of the cabinet includes the basic profile with a height of 50 mm.

Type - 05A Combined cabinet

800 mm

900 mm

800 mm

900 mm

* EPH and EPU cabinets are divided into two parts. In the left part there are four shelves, in the right part one shelf and a clothes rail
The indicated height of the cabinet includes the basic profile with a height of 50 mm.

Type - 06A Pass-trough cabin

300 mm
400 mm
600 mm
800 mm
900 mm
1200 mm
300 mm
400 mm
600 mm
800 mm
900 mm
1200 mm

The indicated height of the cabinet includes the basic profile with a height of 50 mm.

Type - 07A Coat hanger rack cabinet

400 mm
600 mm
800 mm
1000 mm
400 mm
600 mm
800 mm
1000 mm

The indicated height of the cabinet includes the basic profile with a height of 50 mm.

Type - 09A Cleanig supplies cabinet

300 mm
400 mm
700 mm
800 mm

The indicated height of the cabinet includes the basic profile with a height of 50 mm.

Colour finish

value	
White colour *	Standard, Standard plus
Stainless steel AISI304, finished SB	Premium 304
corpus white / door grey **	Standard
corpus white / door delf blue **	Standard
corpus white / door lime green **	Standard
corpus grey / door grey **	Standard
corpus grey /door delf blue **	Standard
corpus grey /door lime green **	Standard
corpus white / door chalk **	Standard plus
corpus white / door grey **	Standard plus
corpus white / door crystal blue **	Standard plus
corpus white /door light grey **	Standard plus
corpus grey /door chalk **	Standard plus
corpus grey /door grey **	Standard plus
corpus white / door crystal blue **	Standard plus
corpus white /door light grey **	Standard plus
Atypical - optional colour finish	Standard, Standard plus

* Basic color design complete white -B001 (applies only to the combination of laminate body / laminate fronts B + BL001)

** basic choice of color two combinations for the body and for the forehead

*** possibility of two color combinations for body and for fronts (choice of above-standard colors for extra charge according to cat.no.212.02)

Exhausting

value	Intended for
corpus without modification	P
modification of the body for air extraction	P / M
* To ensure airflow, the gap under the door must be min. 60 mm, gap 60 mm in the cabinet ceiling. Offset of shelves from the front and back 30 mm	

Atypical execution

Typical execution
Atypical execution
Typical execution 0 - clear choice from the options Atypical execution Q - Atypical design, which can not be clearly identified by means of code

MORE INFORMATION, PHOTOS

