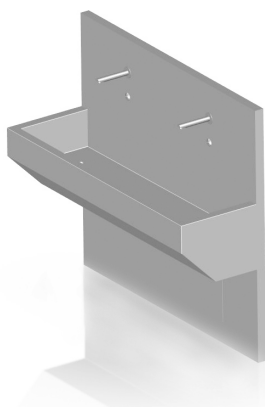


cat. no. 215.05

Stainless steel medical furnishings

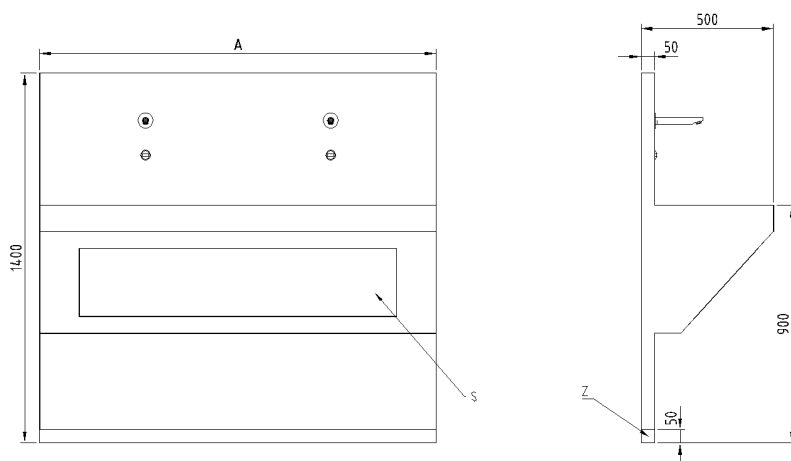
## WASH TROUGH



- The wash trough was specially developed primarily for pre-operative rooms. It meets the stringent requirements for equipment designed for clean areas.
- The trough is equipped with sensor-operated mixers. It is made of AISI 304 stainless steel.
- It is available in the standard widths of 800, 1500, 1850, 2100 and 2400 mm. The wash trough is mounted on a 50 mm high profile. The total post-installation height of the rear wall of the trough is 1400 mm. The trough is situated at a height of 850 mm.

### Size selection:

Width A (mm)	800; 1500; 1850; 2100; 2400
Depth (mm)	500
Height (mm)	900
Total height ofv rear panel (mm)	1400



Description:

S - Servis open

Z - Basic profil height 50 mm

## TECHNICAL DATA

### Type designation

Wash trough

### Trough width

value	width
Trough width. One sensor-operated mixer	800 mm
Trough width. Two sensor-operated mixers	1500 mm
Trough width. Two sensor-operated mixers	1850 mm
Trough width. Two sensor-operated mixers	2100 mm
Trough width. Three sensor-operated mixers	2100 mm
Trough width. Three sensor-operated mixers	2400 mm

### Variation of basic profile design

Stainless steel basic profil

the basic profile is covered with flooring

the basic profile is varnished RAL

### Atypical design

Type design

Atypical design

Type design

0 - Unique specification out of offered versions

Atypical design

Q - atypical design that cannot be uniquely specified by a code

## MORE INFORMATION, PHOTOS

