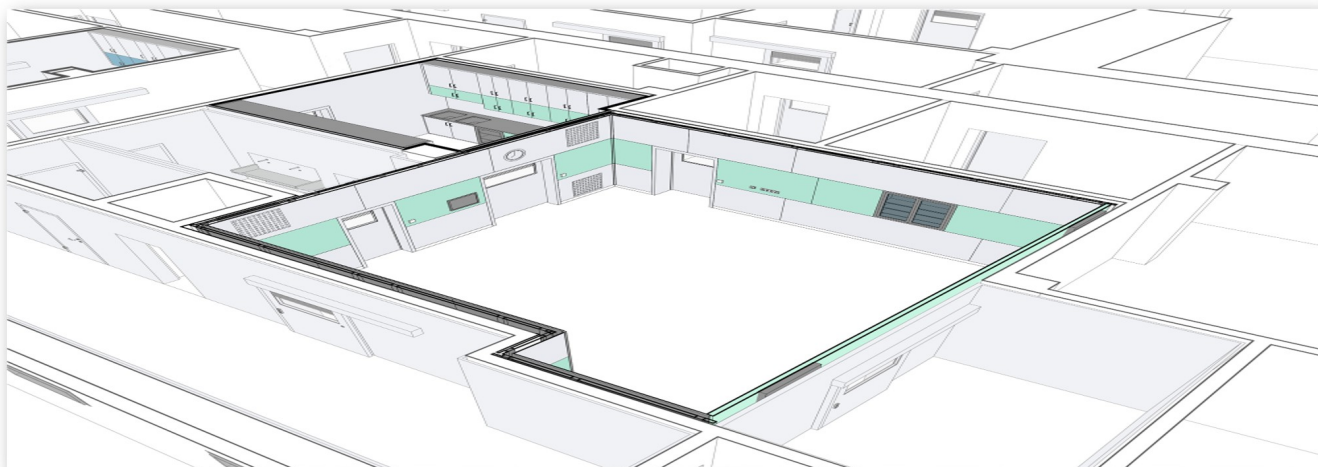


Partition panels BLOCK Surgical

ASSEMBLY ELEMENTS OF THE BUILT-IN SYSTEMS



Description and Application

Profiles for the assembly of built-in systems are an integral part of the individual systems such as partitions, ceilings, doors, glazing, and so on. . .

According to their use and application for the individual systems, you will find them in the respective items of this eCatalogue. They are sorted and integrated according to their standard application and use, including specific marking.

This content serves to centralize the Assembly Elements standardly used for the assembly of product lines.

In the assembly elements documents, you will find lists of these elements with added specifications, which are standardized assembly elements used for the assembly of individual built-in systems and products.

Division and Sorting of Assembly Elements - according to use and their application:

102.90 - MS ASSEMBLY ELEMENTS - ASSEMBLY OF PARTITION PANELS - MS

102.91 - MD ASSEMBLY ELEMENTS - PARTS FOR ADDITIONAL EDGING OF PARTITIONS - MD

102.92 - MO ASSEMBLY ELEMENTS - ASSEMBLY OF THE MODULAR SYSTEM - MO

102.93 - DV ASSEMBLY ELEMENTS - ASSEMBLY OF DOUBLE COMPONENTS - DV

105.01 - MS ASSEMBLY ELEMENTS - ASSEMBLY OF THE LIGHTWEIGHT METAL CEILING - MS

105.07 - MS ASSEMBLY ELEMENTS - ASSEMBLY OF THE WALK-ON CASSETTE CEILING - MS

401.01 - SU ASSEMBLY ELEMENTS - ASSEMBLY OF THE SURGICAL SYSTEM - SU

102.82 - F ASSEMBLY ELEMENTS - ALUMINIUM COVING AND ITS ACCESSORIES - F, FB, FV

102.83 - FA ASSEMBLY ELEMENTS - ALUMINIUM COVING AND ITS ACCESSORIES - FA, FAS, FAV, P

MORE INFORMATION, PHOTOS

