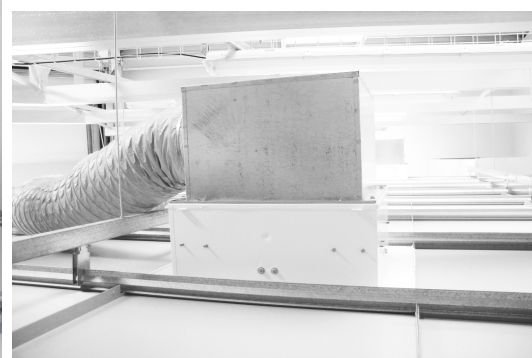


Filtration attachments

PUROFIL FILTER HOUSINGS FOR LIGHT METAL CEILINGS



PUROFIL filter housings are the terminal filter element for air distribution in spaces with high demands on environmental cleanliness.

The housings are designed for installation into a light metal ceiling with a 625x625 mm grid.

PRODUCT DESCRIPTION

- The height of the casing and the size of the supply air spigot depend on the required amount of supplied air.
- The housings are standardly equipped with one port for aerosol leakage testing.

The housings consist of two parts:

1) LOWER PART

Equipped with a HEPA filter with filtration class:

- E11: filtration class E11
- H13: filtration class H13
- H14: filtration class H14



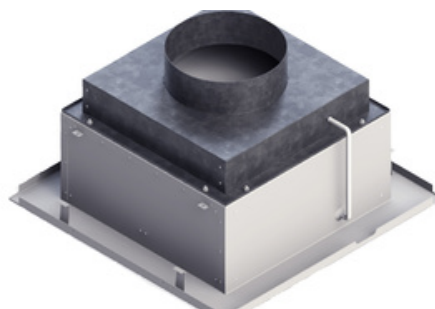
Ensures high dimensional stability

2) UPPER PART

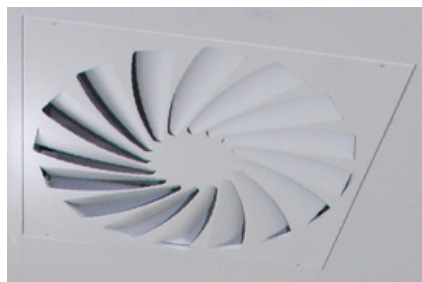
Made of galvanized sheet metal

With air supply (inlet spigot):

- Side circular
- Top circular



TYPES OF OUTLET ELEMENTS



1) Swirl diffuser



2) Perforated plate with ~30% free area

TECHNICAL DATA

Product Type

PUROFIL Filter Housings for LM

A - old system (until 06/2005), B - old system (until 06/2009), C - new system – snap-in, compatible with the updated light metal ceiling and luminaires (from 06/2009), D – marking change 05/2013, E - marking change 10/2015 (filter clamps in the corner, end element 8mm on a central screw into a crossbar)

Filter Size

Filter dimensions 305 x 305 x 117

Filter dimensions 457 x 457 x 117

Filter dimensions 570 x 570 x 117

filter dimension tolerance +0/-0.5 mm

Air intake

side with round neck

upper with round neck

Atypical execution

Typical execution

Atypical execution

Typical execution

0 - clear choice from the options

Atypical execution

Q - Atypical design, which can not be clearly identified by means of code

MORE INFORMATION, PHOTOS

