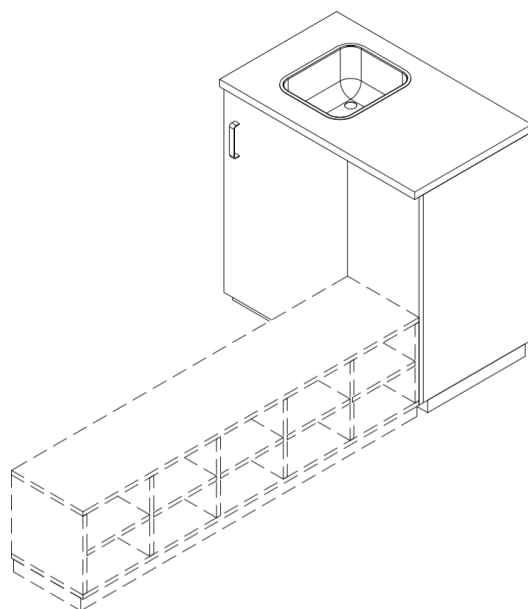
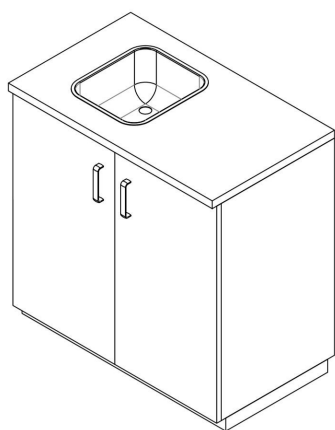


cat. no. 216.08

Personnel Airlocks

SINK CABINET



- Completes the range of facilities for personnel and material pass-through.
- Sink cabinets are available in two designs
 - door design
 - design suited for optional step-over bench

DIMENSIONAL RANGE

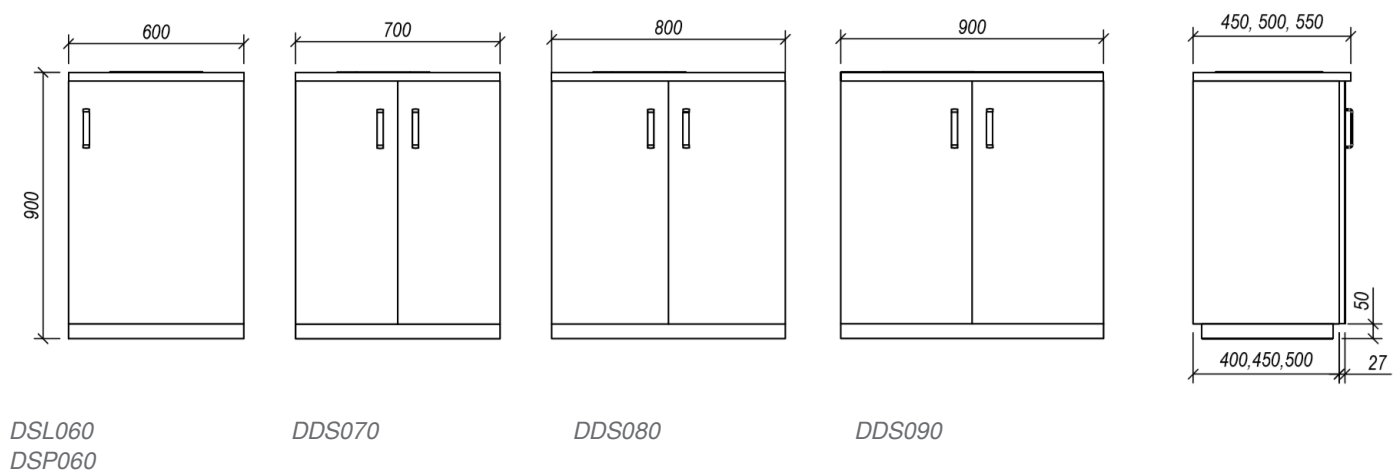
width (mm)

600, 700, 800, 900

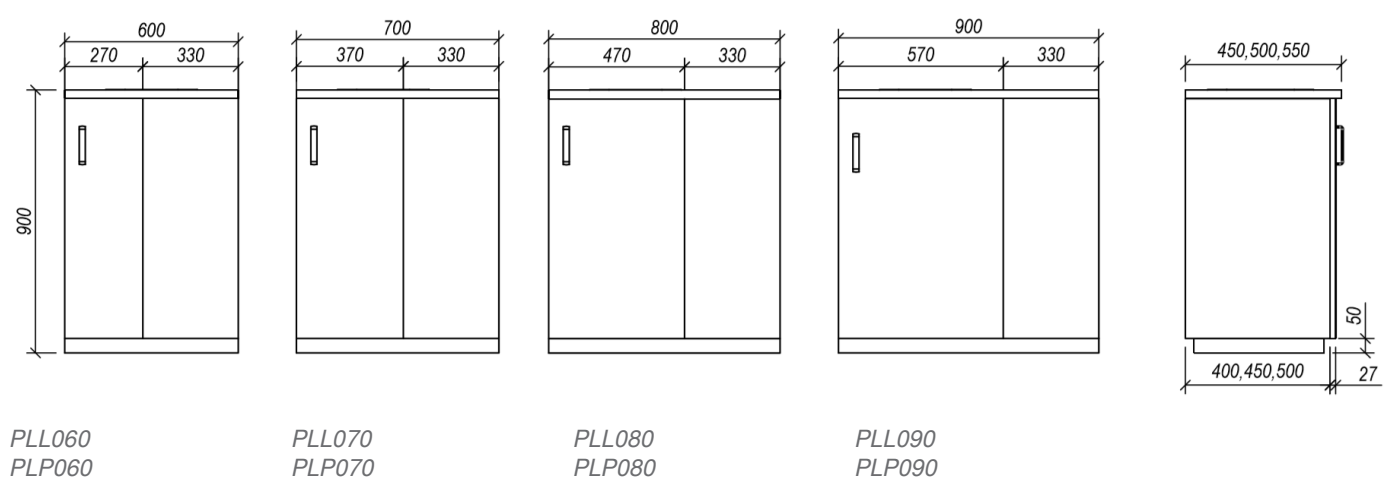
depth (mm)

400, 450, 500,

Fronts i design STANDARD, STANDARD PLUS, PREMIUM 304



Sink cabinet



Sink cabinet, suited for optional step-over bench

TECHNICAL DATA

Type designation		
value	width	depth
Sink cabinet	600, 700, 800, 900 mm	400, 450, 500 mm

Material design	
value	Material
Standard	The cabinet is made entirely of laminated boards (body, door), worktop HPL 12 mm
Standard plus	Body is made of laminated board 18 mm, door of HPL 12 mm
Premium 304	The cabinet is made of stainless steel AISI 304, surface SB

Type design		
value	width	Intended for
Sink cabinet	600 mm	left door
Sink cabinet	600 mm	right door
Sink cabinet	700 mm	double door
Sink cabinet	800 mm	double door
Sink cabinet	900 mm	double door
Sink cabinet with a bench fitted from the left	600 mm	left door
Sink cabinet with a bench fitted from the left	700 mm	left door
Sink cabinet with a bench fitted from the left	800 mm	left door
Sink cabinet with a bench fitted from the left	900 mm	left door
Sink cabinet with a bench fitted from the right	600 mm	right door
Sink cabinet with a bench fitted from the right	700 mm	right door
Sink cabinet with a bench fitted from the right	800 mm	right door
Sink cabinet with a bench fitted from the right	900 mm	right door
atypical design	mm	
The height of the cabinet is 900 mm, including a basic profile height of 50 mm		

Cabinet depth	
	depth
Standard	450 mm
Standard plus	450 mm
Premium 304 *	450 mm
Standard	500 mm
Standard plus	500 mm
Premium 304 *	500 mm
Standard	550 mm
Standard plus	550 mm
Premium 304 *	550 mm

Plinth 50 mm	
value	
Basic profile covered with floor covering. For new floor covering	Standard, Standard plus, Premium 304
Metal profile with surface finish. For the existing floor covering	Standard, Standard plus
Stainless steel profile AISI 304, surface SB (for existing floor coverings)	Premium 304
atypical	

Colour finish of the cabinet	
value	
White colour*	Standard, Standard plus
corpus white / door grey *	Standard
corpus white / door delf blue **	Standard
corpus white / door lime green **	Standard
corpus grey / door grey **	Standard
corpus grey /door delf blue **	Standard
corpus grey /door lime green **	Standard
corpus white / door chalk **	Standard plus
corpus white / door grey **	Standard plus
corpus white / door crystal blue **	Standard plus
corpus white /door light grey **	Standard plus
corpus grey /door grey **	Standard plus
corpus white / door crystal blue **	Standard plus
corpus white /door chartreuse **	Standard plus
Stainless steel AISI304, finished SB	Premium 304
Non-standard - optional colour finish	
* Basic design complete white - B001 (applies only to the combination of body and laminate fronts)	
** basic choice of two color combinations for the body and for the forehead	
*** possibility of two color combinations for body and for fronts (choice of above-standard colors for extra charge according to cat.no.212.02)	

Worktop - surface, color	
Material	
Smooth worktop *, HPL-chalk color	Standard, Standard plus
Smooth worktop *, HP- grey color	Standard, Standard plus
Smooth worktop, Stainless steel AISI 304	Premium 304
Smooth worktop with rear rim, Stainless steel AISI 304	Premium 304
Worktop with offset, Stainless steel AISI 304	Premium 304
Worktop with offset and a rear rim, Stainless steel AISI 304	Premium 304
* rear rim height 30mm on the stainless steel worktop always only from the back (right and left side of the worktop without rim)	

Handle	
value	
matt chrome-plated steel *	Standard, Standard plus, Premium 304
brushed stainless steel *	Standard, Standard plus, Premium 304
* the handles are mounted vertically on the cabinet doors, horizontally on the drawers	
The spacing of the holes for mounting the handle is always 128 mm.	

Sink type	
dimension	Intended for
400x290x200	Sink type VA294020SX ***
400x340x180	Sink type VA344018SX ***
400x400x200	Sink type VA404020A

Sink position in the worktop	
value	
The sink is located at the left of the cabinet	PLL
The sink is located at the right of the cabinet	PLP
The sink is located at the centre of the cabinet	DDS, DSL, DSP

Mixer-tap type

Upright single-lever mixer

Kitchen Sink Faucet with Pullout Spray Spout

Upright sensor-controlled mixer

Airblade Wash+Dry hand dryer

Bar/Prep Faucet with On/Off Activation

atypical

Faucets always have a diameter of 35 mm to drill into the worktop.

* for this type of faucet it is always necessary to take into account the mains power supply (socket 1x 230V) for connecting a dryer / sensors (located in the lower part behind the cabinet)

** this type of tap is with only one inlet, for cold and hot water supply it must be supplemented with a thermostatic mixing valve (mixing valve is a part of codes W02CS-S, W03CS-S). The mixing valve must be ordered from another supplier

Mixer tap position

value

The mixer tap located right of the sink	400, 450, 500
---	---------------

The mixer is located at the centre of the cabinet	400, 500
---	----------

The mixer tap located left of the sink	400, 450, 500
--	---------------

No hole for the mixer tap in the worktop	
--	--

does not apply to mixer W03-S (this is always mounted in the middle of the sink)

Non-standard design

Standard design

Non-standard solution

Standard design

0 - clear specification out of offered options

Non-standard design

Q - atypical solution that cannot be clearly specified using a code

MORE INFORMATION, PHOTOS

