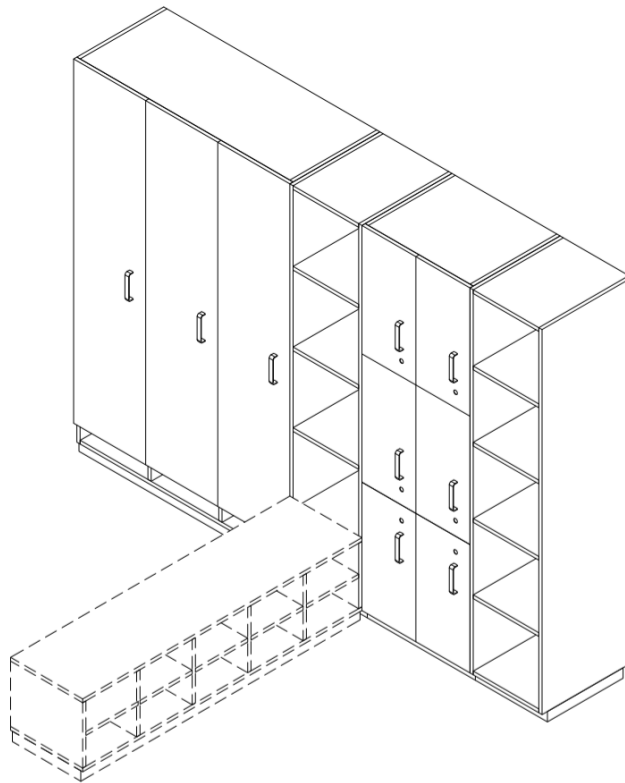


---

Personnel Airlocks

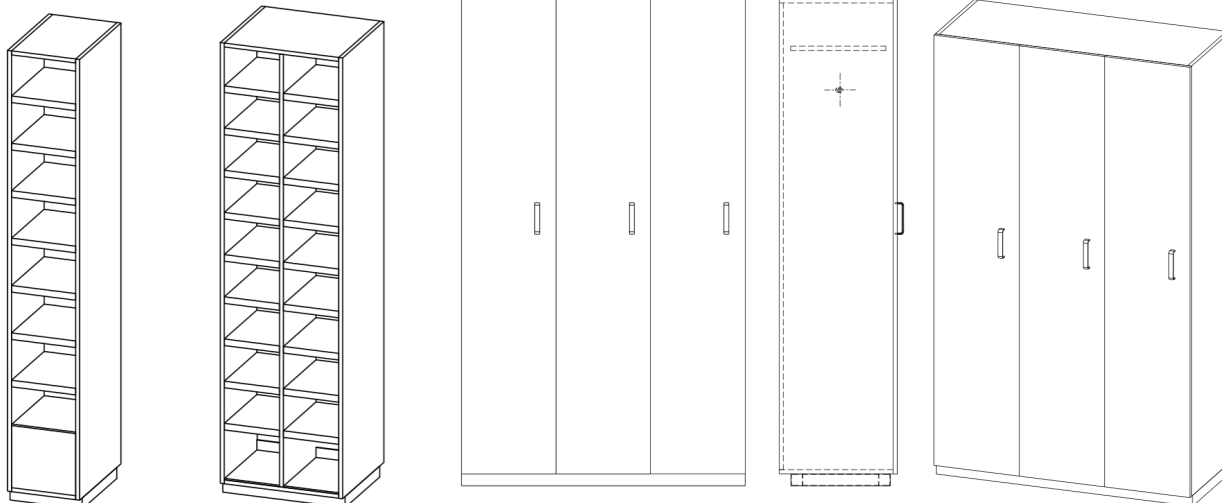
## HIGH CABINET



- 
- Complete the range of facilities for personnel pass-throug
  - The cabinet is used to store shoes, clothes, cleaning products.
  - The cabinets are mounted on the basic section-steel, with a height of 50 mm. This section is coated with flooring or treated with thermosetting powder coating RAL 9016
  - Cabinets are also offered in a version with extraction and it is possible to cover them to the ceiling.

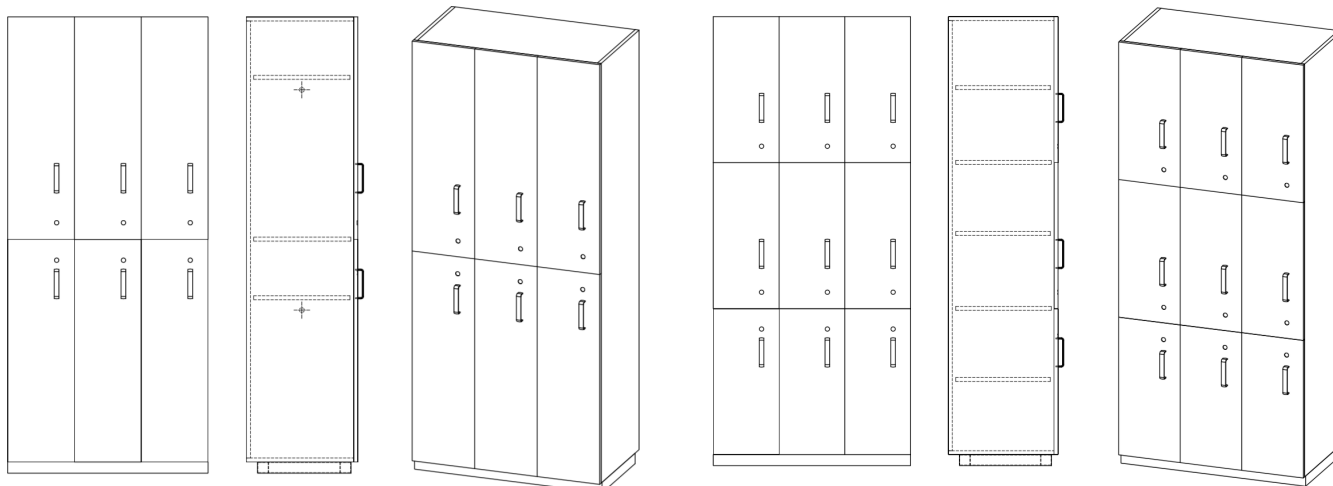
### PRODUCT LIST CONTENTS:

- 01A Shoe cabinet
- 02A Boxes
- 03A Wardrobes
- 04A Cabinet with shelves
- 05A Combined cabinet
- 06A Pass-trough cabinet
- 07A Coat hanger rack cabinet
- 09A Clearing supplies cabinet

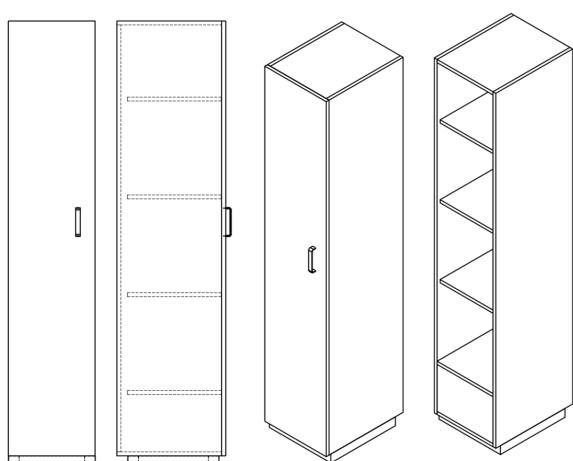


**01** Shoe cabinet

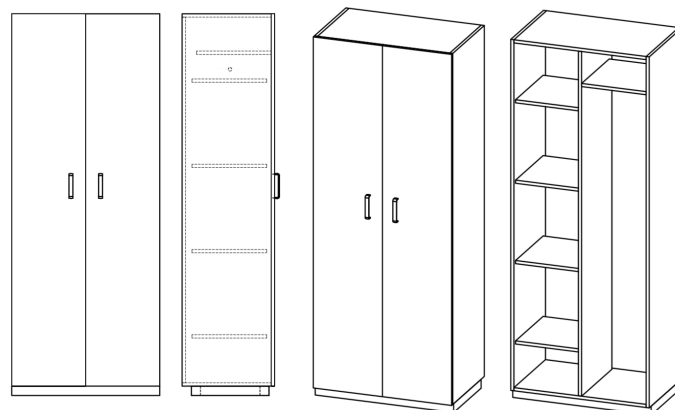
**03** Wardrobes



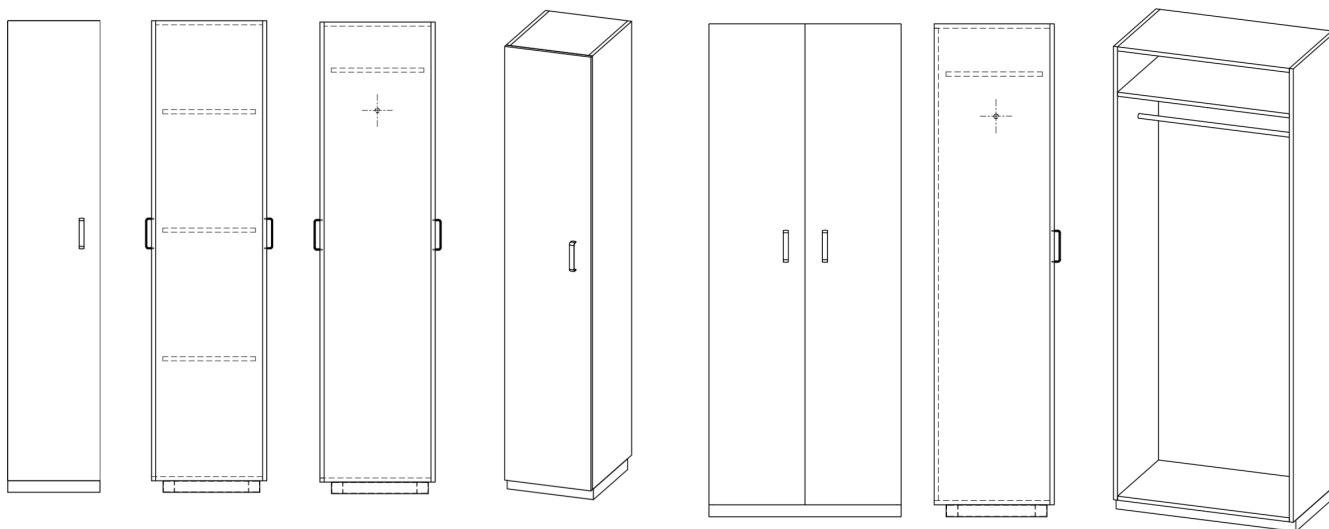
**02** Boxes



**04** Cabinet with shelves

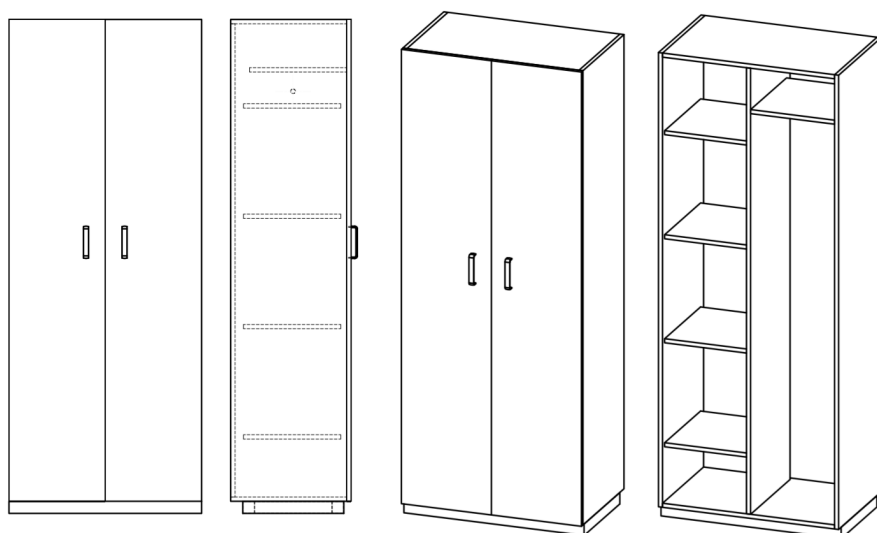


**05** Combined cabinet



**06** Pass-trough cabin

**07** Coat hanger rack cabinet



**09** Cleanig supplies cabinet

## MORE INFORMATION, PHOTOS



## TECHNICAL DATA

### Group

High cabinets

Type designation		
value	width	depth
Shoe cabinets	330, 560 mm	400, 450, 500 mm
Boxes	300, 400, 600, 800, 900, 1200 mm	400, 450, 500 mm
Wardrobes	300, 400, 600, 800, 900, 1200 mm	400, 450, 500 mm
Cabinet with shelves	330, 400, 600, 800, 900 mm	400, 450, 500 mm
Combined cabinet	800, 900 mm	400, 450, 500 mm
Pass-trough cabin	300, 400, 600, 800, 900, 1200 mm	400, 450, 500 mm
Coat hanger rack cabinet	400, 600, 800, 1200 mm	400, 450, 500 mm
Cleanig supplies cabinet	300, 400, 700, 800 mm	400, 450, 500 mm

Material design	
value	Material
Standard	The cabinet is made of pressed laminated boards th. 18mm (body, doors and shelves)
Standard plus	The body is made of laminated boards th. 18mm, door made of high-pressure laminate th. 12mm
Premium 304	The cabinet is made of stainless steel AISI 304, surface SB

Type - 01A Shoe cabinet
330 mm
560 mm
330 mm
560 mm
The height of the cabinet is always 2050 mm and is stated including the basic profile height of 50 mm. The shelves for shoe cabinets are made of metal sheets, provided with powder paint RAL 9016.

Type - 02A Boxes
300 mm
400 mm
600 mm
800 mm
900 mm
1200 mm
300 mm
400 mm
600 mm
800 mm
900 mm
1200 mm
The height of the cabinet is always 2050 mm and is stated including the basic profile height of 50 mm.

Type - 03A Wardrobe
300 mm
400 mm
600 mm
800 mm
900 mm
1200 mm
The indicated height of the cabinet includes the basic profile with a height of 50 mm.

**Type - 04A Cabinet with shelves**

330 mm

400 mm

600 mm

800 mm

400 mm

800 mm

900 mm

The indicated height of the cabinet includes the basic profile with a height of 50 mm.

**Type - 05A Combined cabinet**

800 mm

900 mm

800 mm

900 mm

The indicated height of the cabinet includes the basic profile with a height of 50 mm.

**Type - 06A Pass-trough cabin**

300 mm

400 mm

600 mm

800 mm

900 mm

1200 mm

300 mm

400 mm

600 mm

800 mm

900 mm

1200 mm

The indicated height of the cabinet includes the basic profile with a height of 50 mm.

**Type - 07A Coat hanger rack cabinet**

400 mm

600 mm

800 mm

1000 mm

400 mm

600 mm

800 mm

1000 mm

The indicated height of the cabinet includes the basic profile with a height of 50 mm.

**Type - 09A Cleanig supplies cabinet**

300 mm

400 mm

700 mm

800 mm

The indicated height of the cabinet includes the basic profile with a height of 50 mm.

Depth	
Material	depth
all types	400 mm
Standard	418 mm
Standard plus	412 mm
Premium 304***	427 mm
all types	450 mm
Standard	468 mm
Standard plus	462 mm
Premium 304***	477 mm
all types	500 mm
Standard	518 mm
Standard plus	512 mm
Premium 304***	527 mm
<p>* depth of cabinets is always given without fronts (doors), the value for open and closed cabinets is 400, 450 or 500mm (body depth), for the body it is always necessary to take into account the addition to the door according to the design: (Standard + 18mm, Standard plus + 12mm , Premium 304 + 22mm) see value: cabinet depth</p> <p>** for pass-trough cabinets (06) it is necessary to take into account the additional addition to the door 2x according to the design for the basic depth of the body 400, 450 or 500mm (Standard 2x + 18mm, Standard plus 2x + 12mm, Premium 304 2x + 22mm)</p>	

Door orientation	
value	intended for
double door	GSU060, GSU080, GSU100 DPU080, DPU090, EPU080, EPU090, HPU070, HPU080
left door	BSU030, BSU040, BSU060, BSU080, BSU090, BSU120 BPU030, BPU040, BPU060, BPU080, BPU090, BPU120 CSU030, CSU040, CSU060, CSU080, CSU090, CSU120 DPU040, GSU040, HPU030, HPU040 FSU030, FSU040, FSU060, FSU080, FSU090, FSU120 FPU030, FPU040, FPU060, FPU080, FPU0
right door	BSU030, BSU040, BSU060, BSU080, BSU090, BSU120 BPU030, BPU040, BPU060, BPU080, BPU090, BPU120 CSU030, CSU040, CSU060, CSU080, CSU090, CSU120 DPU040, GSU040, HPU030, HPU040 FSU030, FSU040, FSU060, FSU080, FSU090, FSU120 FPU030, FPU040, FPU060, FPU080, FPU0
open without door	APL033, APL056, APH033, APH056 DPL033, DPH040, DPH060, DPH090, EPH080, EPH090, GSH040, GSH060, GSH080, GSH100

Lock	
value	intended for
with lock */**	with door
without lock	with door / open
<p>* It is a lock for various closures (choice for cabinet type: 01, 02, 03, 04, 05, 07, 09)</p> <p>** doors of one compartment have the same lock on both sides (only for cabinet type: 06 - interleaving cabinet)</p>	

Plinth 50 mm	
value	
Basic profile covered with floor covering. For new floor covering	Standard, Standard plus, Premium 304
Metal profile with surface finish RAL 9016. For the existing floor covering	Standard, Standard plus
Basic stainless steel profile, for existing floor.	Premium 304
atypical	Standard, Standard plus, Premium 304

Colour finish	
value	
White colour *	Standard, Standard plus
Stainless steel AISI304, finished SB	Premium 304
corpus white / door grey **	Standard
corpus white / door delf blue **	Standard
corpus white / door lime green **	Standard
corpus grey / door grey **	Standard
corpus grey / door delf blue **	Standard
corpus grey / door lime green **	Standard
corpus white / door chalk **	Standard plus
corpus white / door grey **	Standard plus
corpus white / door crystal blue **	Standard plus
corpus white / door light grey **	Standard plus
corpus grey / door chalk **	Standard plus
corpus grey / door grey **	Standard plus
corpus white / door crystal blue **	Standard plus
corpus white / door light grey **	Standard plus
Atypical - optional colour finish	Standard, Standard plus
* Basic color design complete white -B001 (applies only to the combination of laminate body / laminate fronts B + BL001)	
** basic choice of color two combinations for the body and for the forehead	
*** possibility of two color combinations for body and for fronts (choice of above-standard colors for extra charge according to cat.no.212.02)	

value	
	Standard, Standard plus, Premium 304
	Standard, Standard plus, Premium 304
	pro otevřeně skříně bez dveří (policové)

Exhausting	
value	Intended for
	P
	P / M

Atypical execution	
Typical execution	
Atypical execution	
Typical execution 0 - clear choice from the options Atypical execution Q - Atypical design, which can not be clearly identified by means of code	