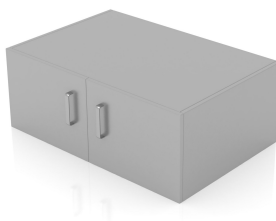


Forlab - Bearing elements

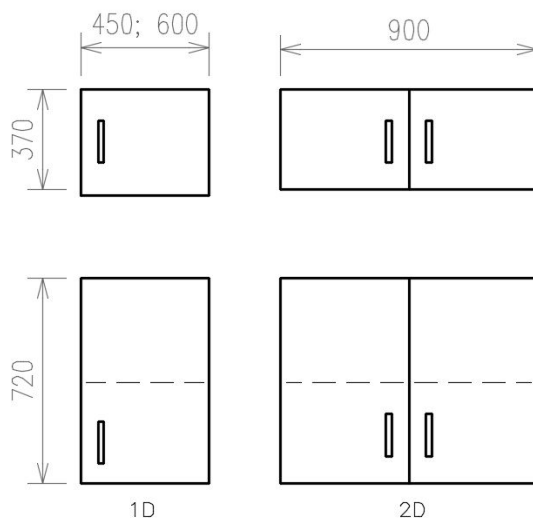
EXTENSIONS OF TALL CABINETS



- Extensions of tall cabinets complement the Forlab system tall cabinets.
- Load capacity of the shelf 10 kg.

Variants of implementation

- The depth of the extension is the same as depth of tall cabinet 450 mm or 600 mm.
- The extension with height of 720 mm as standard is equipped with 1 shelf



EXTENSIONS OF TALL CABINETS

S1: Type designation

210.02B: Extensions of tall cabinets

S2: Material design

value	material
A: Standard	The cabinet is made of molded laminated panels
B: Standard plus	Body is made of molded laminated panels, fronts are made of high pressure laminate of standard performance
C: Premium	Body and fronts are made of metal sheets with a chemically resistant coating

S3: Cabinet width

value	width
450: Cabinet width	450 mm
600: Cabinet width	600 mm
900: Cabinet width	900 mm

S4: Cabinet depth

value	depth
450: Cabinet depth	450 mm
600: Cabinet depth	600 mm

S5: Cabinet height

value	height
370: Cabinet height	370 mm
720: Cabinet height	720 mm

S6: Cabinet design

1DL: Cabinet with solid left-hand door
 1DP: Cabinet with solid right-hand door
 2D: Cabinet with solid double wing door

S7: Lock - for extra charge

N: Cabinet without lock
 ZJ: Simple lock (for doors and drawers)
 ZR: Multipoint lock (for tall double-wing cabinets)

S8: Handle

U1: Standard handle circular with pitch of 128 mm
 U2: Standard handle oval with pitch of 128 mm

S9: Hardware

KSS: Standard
 KST: With damping and buffer - additional cost

Forlab - Bearing elements

EXTENSIONS OF TALL CABINETS

S10: Colour

BH001: The basic color for the material of the cabinets is STANDARD PLUS. Whole cabinet is in white colour.
BH002: The basic color for the material of the cabinets is STANDARD PLUS. Corpus white, gray fronts.
BH003: The basic color for the material of the cabinets is STANDARD PLUS. Corpus white, light blue fronts.
BH004: The basic color for the material of the cabinets is STANDARD PLUS. Corpus white, light green fronts.
BL001: The basic color for the material of the cabinets is STANDARD and PREMIUM . Whole cabinet is in white colour.
BL002: The basic color for the material of the cabinets is STANDARD and PREMIUM . Corpus white, gray fronts.
BL003: The basic color for the material of the cabinets is STANDARD and PREMIUM . Corpus white, blue fronts.
BL004: The basic color for the material of the cabinets is STANDARD and PREMIUM . Corpus white, green fronts.
BL005: The basic color for the material of the cabinets is STANDARD and PREMIUM . Corpus white, creamy-yellow fronts.
Bxxxx: Other than the basic colour of cabinets. The combination of colours in accordance with codes, see chapter Design.

S11: Atypical - another solution in agreement with the trader

AT: Atypical finish - for extra charge
ST: Standard finish