

cat. no. 209.01

Upper wall-mounted cabinet

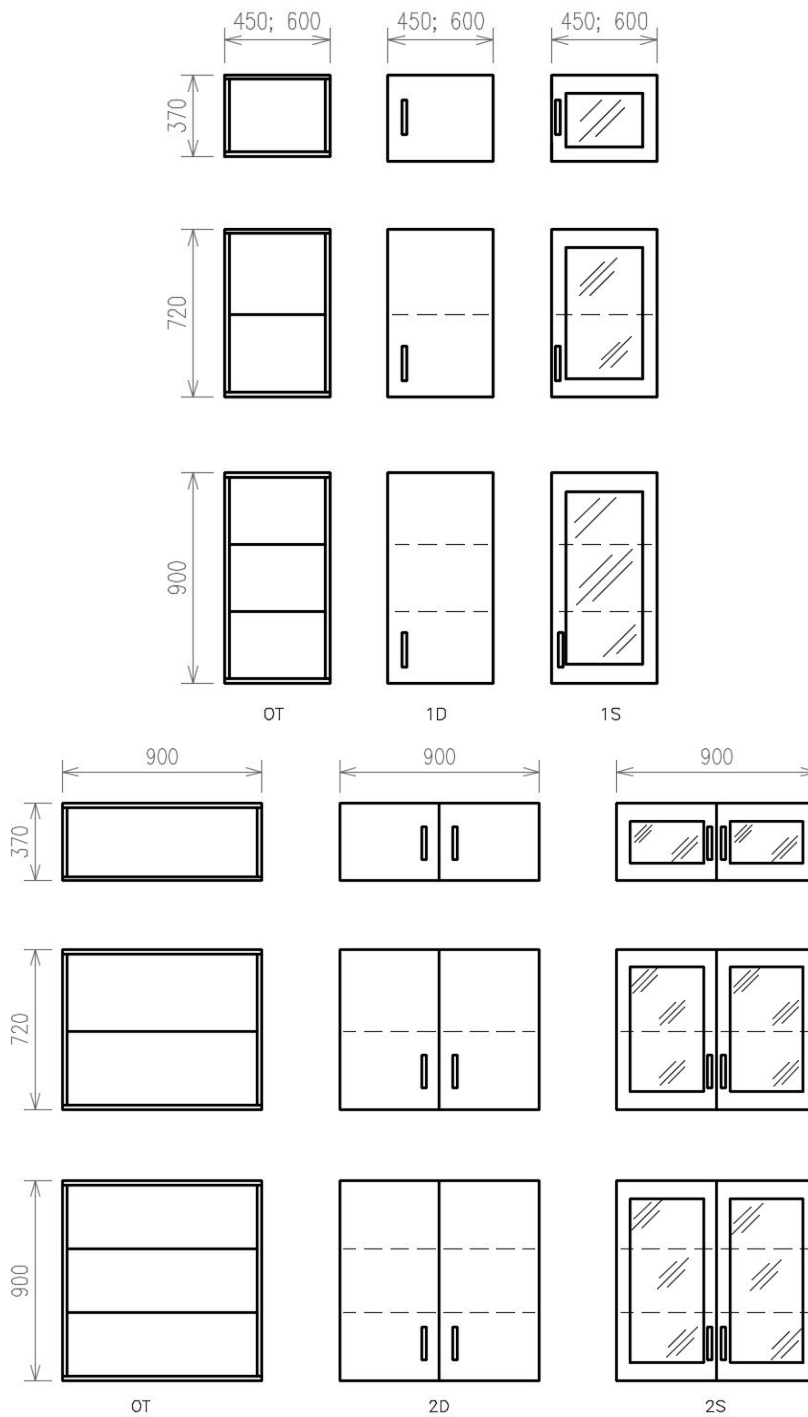
UPPER WALL-MOUNTED CABINET



-
- Wall-mounted upper cabinets complement the Forlab system with above-the-worktop storage space.
 - The cabinets are designed to be installed on the wall.
 - For cabinets with glass door, the glass is mounted on an aluminum frame.
 - Load capacity of the shelf 10 kg.
 - Total load capacity of the cabinet 20 kg.

Cabinet design

- The standard cabinet depth is 340 mm.



MORE INFORMATION, PHOTOS



TECHNICAL DATA

Type designation

Wall-mounted upper cabinets

Material design

| value | Material |
|---------------|--|
| Standard | The cabinet is made of molded laminated panels |
| Standard plus | Body is made of molded laminated panels, fronts are made of high pressure laminate of standard performance |
| Premium | Body and fronts are made of metal sheets with a chemically resistant coating |

Cabinet width A

| width | value |
|--------|---------------|
| 450 mm | Cabinet width |
| 600 mm | Cabinet width |
| 900 mm | Cabinet width |

Cabinet height C

| height | value |
|--------|----------------|
| 370 mm | Cabinet height |
| 720 mm | Cabinet height |
| 900 mm | Cabinet height |

Cabinet design

Cabinet with solid left-hand door
 Cabinet with solid right-hand door
 Cabinet with glazed left-hand door
 Cabinet with glazed right-hand door
 Cabinet with solid double wing door
 Cabinet with glazed double wing door
 Open cabinet

Material shelf

Stainless steel AISI 304 SB
 Metal shelves with RAL 9016
 High-pressure shelves
 Pressed laminated shelves
 For low cabinet height 370
 Shelf standard. Material design A shelf LM, design B shelf LM. Material design C shelf 9016
 As standard, door cabinets 720 and 900 mm are equipped with one shelf. The 350 mm cabinet is without a shelf.

Cabinet lock - above standard

Cabinet without lock
 Lock for glass doors
 Lock for glass double wing doors
 Simple lock (for doors and drawers)

Handle

Without handles - always for variant of OT cabinet and tip-on handle
 Standard handle circular with pitch of 128 mm
 Standard handle oval with pitch of 128 mm

Hardware

Without hardware - Specification for open cabinet

With damping and buffer

Handle tip-on - above standard

body color - white

body color - gray

Colour

The basic color for the material of the cabinets is STANDARD PLUS. Whole cabinet is in white colour.

The basic color for the material of the cabinets is STANDARD PLUS. Corpus white, gray fronts.

The basic color for the material of the cabinets is STANDARD PLUS. Corpus white, light blue fronts.

The basic color for the material of the cabinets is STANDARD PLUS. Corpus white, light green fronts.

The basic color for the material of the cabinets is STANDARD and PREMIUM . Whole cabinet is in white colour.

The basic color for the material of the cabinets is STANDARD and PREMIUM . Corpus white, gray fronts.

The basic color for the material of the cabinets is STANDARD and PREMIUM . Corpus white, blue fronts.

The basic color for the material of the cabinets is STANDARD and PREMIUM . Corpus white, green fronts.

The basic color for the material of the cabinets is STANDARD and PREMIUM . Corpus white, creamy-yellow fronts.

Other than the basic colour of cabinets. The combination of colours in accordance with codes, see chapter Design.

Atypical execution

Typical execution

Atypical execution

Typical execution

0 - clear choice from the options

Atypical execution

Q - Atypical design, which can not be clearly identified by means of code