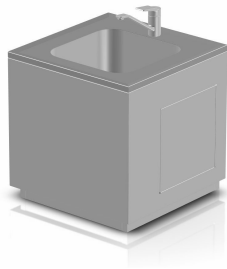


## Washing

# STAINLESS STEEL SINKS



- A stainless steel sink assembly consists of a worktop, in which a stainless steel basin is welded, and a supporting frame. The removable rack above the sink is used as a shelf. The legs feature standard adjustable feet allowing to adjust the basin height (approx. 30 mm).
- Dimensional range
  - simple sink: 600x600x600 mm
  - combined sink: 600x680x1100 mm

## TECHNICAL DATA

### Type designation

Stainless steel sink GMP

### Sink version

| value         | width  | height  | depth  |
|---------------|--------|---------|--------|
| Simple sink   | 600 mm | 600 mm  | 600 mm |
| Combined sink | 600 mm | 1100 mm | 680 mm |

### Door for service

service door from the front

service door from the left

service door from the right

### Variation of basic profile design

Stainless steel basic profil, 50mm

the basic profile is covered with flooring, 50mm

### Assembly of the basic profile

stands back and at the left of the wall

stands back and to the right of the wall

stands back at the wall

### Mixer

Single lever mixer - Not part of the sink (combined)  
single lever on the wall  
Single lever mixer (simple)  
Single lever pillar mixer with pull-out spout (simple)

### Sink

Stainless steel AISI 304 (simple)  
Stainless steel AISI 316 (simple)  
Plastic (simple)

### Anchoring to floor

anchoring to floor  
sink is not anchored

### Atypical execution Water trap

Typical execution  
Atypical execution  
Typical execution  
0 - clear choice from the options  
Atypical execution  
Q - Atypical design, which can not be clearly identified by means of code

## MORE INFORMATION, PHOTOS

