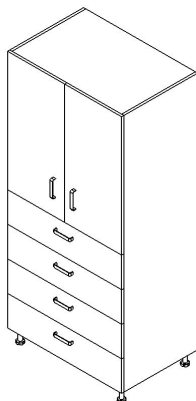


Forlab - Bearing elements

TALL CABINETS AND MID-SIZE CABINETS



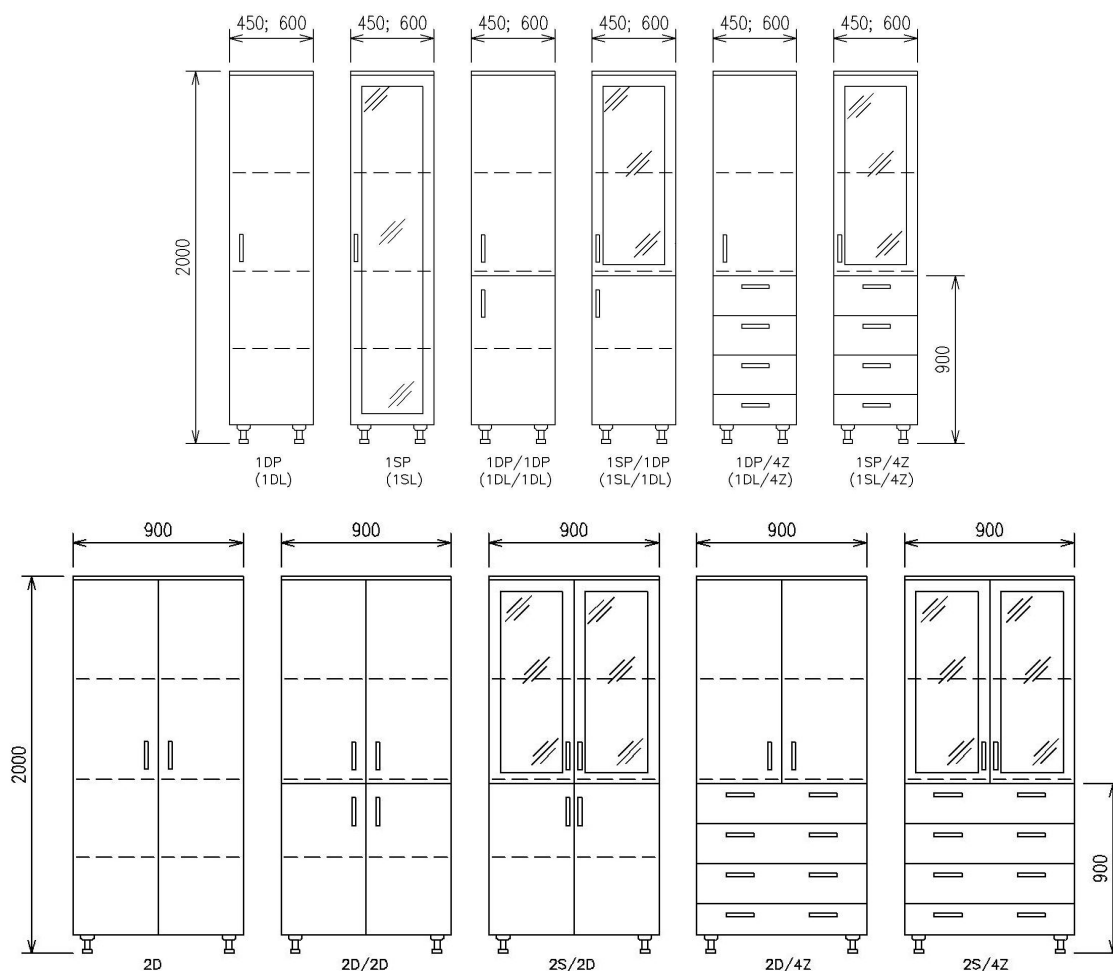
- Tall, medium and wardrobe cabinets complement system Forlab with the practical storage solutions in the laboratories, pharmacies and wherever is required equipment which meets all of the requirements for appearance, function and durability, as well as the criteria of standards and safety
- We offer variants of the cabinets with glazing where glass mounted on an aluminum frame
- Load capacity of the shelf 30 kg.
- Load capacity of the drawer 30 kg.

Forlab - Bearing elements

TALL CABINETS AND MID-SIZE CABINETS

Variants of implementation:

- Tall cabinets
 - The depth of tall cabinets may be selected from two options (450 and 600 mm).
 - Cabinets with one door in the basic version are equipped with 3 adjustable shelves and cabinets with a split doors are equipped with 1 fixed and 2 adjustable shelves. Combined cabinets with drawers are in the basic version equipped with 1 adjustable shelf.

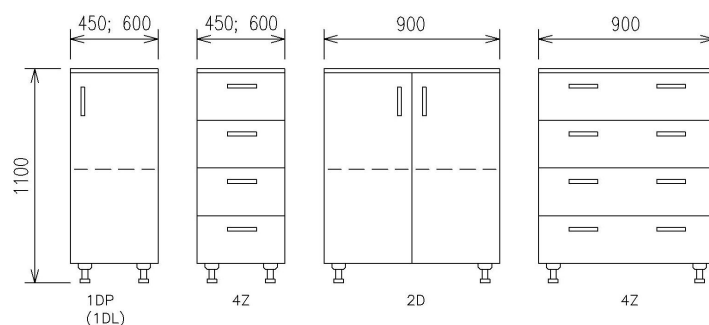


Forlab - Bearing elements

TALL CABINETS AND MID-SIZE CABINETS

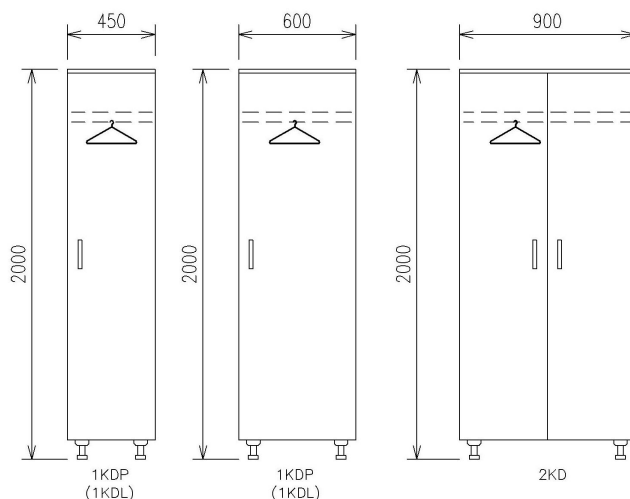
- Medium cabinets

- The depth of medium cabinets may be selected from two options (450 and 600 mm)
- In the basic version cabinets are equipped with 1 adjustable shelf



- Wardrobes

- The depth of wardrobe can be selected from two options (450 a 600 mm).
- The cabinet is equipped with 1 fixed shelf, in the top part of cabinet, under the shelf is positioned rod for hanging of clothes



Forlab - Bearing elements

TALL CABINETS AND MID-SIZE CABINETS

S1: Type designation

210.01: Tall cabinets and mid-size cabinets

S2: Material design

value	material
A: Standard	The cabinet is made of molded laminated panels
B: Standard plus	Body is made of molded laminated panels, fronts are made of high pressure laminate of standard performance
C: Premium	Body and fronts are made of metal sheets with a chemically resistant coating

S3: Cabinet width

value	width
450: Cabinet width	450 mm
600: Cabinet width	600 mm
900: Cabinet width	900 mm

S4: Cabinet depth

value	depth
450: Cabinet depth	450 mm
600: Cabinet depth	600 mm

S5: Cabinet height

value	height
1100: Mid-size cabinet height	1100 mm
2000: Tall cabinet height	2000 mm

Forlab - Bearing elements

TALL CABINETS AND MID-SIZE CABINETS

S6: Cabinet design

1DL: Single door cabinet, full, with right opening - narrow and medium cabinet
1DL/1DL: Double door wardrobe divided, full, with left opening - narrow tall cabinet
1DL/4Z: Single door cabinet, full, with left opening with four drawers - narrow tall cabinet
1DP: Single door cabinet, full, with right opening - narrow, tall and medium cabinet
1DP/1DP: Double door cabinet split, with right opening - narrow tall cabinet
1DP/4Z: Single door cabinet, full, with right opening with four drawers - narrow tall cabinet
1KDL: Wardrobe cabinet, single door with left opening - narrow closet
1KDP: Wardrobe cabinet, single door with a right opening - narrow closet
1SL: Single door cabinet with glass, left opening - narrow tall cabinet
1SL/1DL: Narrow divided cabinet with glazed and solid left-hand doors
1SL/4Z: Single door cabinet with glass, left opening, with four drawers - narrow tall cabinet
1SP: Single door glazed cabinet with right opening - narrow tall cabinet
1SP/1DP: Double door wardrobe, split, glazed and with right opening - narrow tall cabinet
1SP/4Z: Single door cabinet glazed with right opening, with four drawers - narrow tall cabinet
2D: Double door cabinet - wide, high and middle wardrobe
2D/2D: Four-door closet, split, full - wide, high cabinet
2D/4Z: Double door wardrobe, split, full, with four drawers - wide high cabinet
2KD: Double door cabinet, full - wide cabinet
2S/2D: Four-door glazed cabinet, split, full - wide high cabinet
2S/4Z: Double door cabinet split, glazed, with four drawers - wide high cabinet
4Z: Cabinet with four drawers - narrow and wide cabinet

S7: Lock - for extra charge

N: Cabinet without lock
ZC: Central lock (for x drawers)
ZJ: Simple lock (for narrow door cabinets and the first drawer)
ZR: Multipoint lock (for tall double-wing cabinets)
Z1S: Lock for glass doors
Z2S: Lock for glass double wing doors

S8: Cabinet end on the floor

BAS: The cabinet is formed on the basic profile. Height 50 mm.
SOK: The cabinet is formed on the basic legs and fitted with plinth. The height of 100 mm.
01NH: Basic leg with plinth. The height of 100 mm.
02NH: Basic plastic front leg. The height of 100 mm.
03NH: Basic aluminum leg. The height of 100 mm.

S9: Handle

U1: Standard handle circular with pitch of 128 mm
U2: Standard handle oval with pitch of 128 mm

S10: Hardware

KSS: Standard
KST: With damping and buffer - for extra charge

Forlab - Bearing elements

TALL CABINETS AND MID-SIZE CABINETS

S11: Colour

BH001: The basic color for the material of the cabinets is STANDARD PLUS. Whole cabinet is in white colour.
BH002: The basic color for the material of the cabinets is STANDARD PLUS. Corpus white, gray fronts.
BH003: The basic color for the material of the cabinets is STANDARD PLUS. Corpus white, light blue fronts.
BH004: The basic color for the material of the cabinets is STANDARD PLUS. Corpus white, light green fronts.
BL001: The basic color for the material of the cabinets is STANDARD and PREMIUM . Whole cabinet is in white colour.
BL002: The basic color for the material of the cabinets is STANDARD and PREMIUM . Corpus white, gray fronts.
BL003: The basic color for the material of the cabinets is STANDARD and PREMIUM . Corpus white, blue fronts.
BL004: The basic color for the material of the cabinets is STANDARD and PREMIUM . Corpus white, green fronts.
BL005: The basic color for the material of the cabinets is STANDARD and PREMIUM . Corpus white, creamy-yellow fronts.
Bxxxx: Other than the basic colour of cabinets. The combination of colours in accordance with codes, see chapter Design.

S12: Atypical - another solution in agreement with the trader

AT: Atypical finish - for extra charge
ST: Standard finish