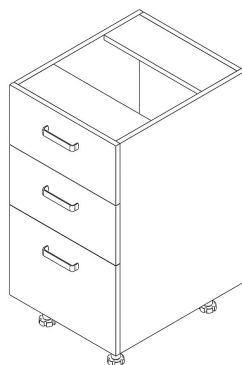


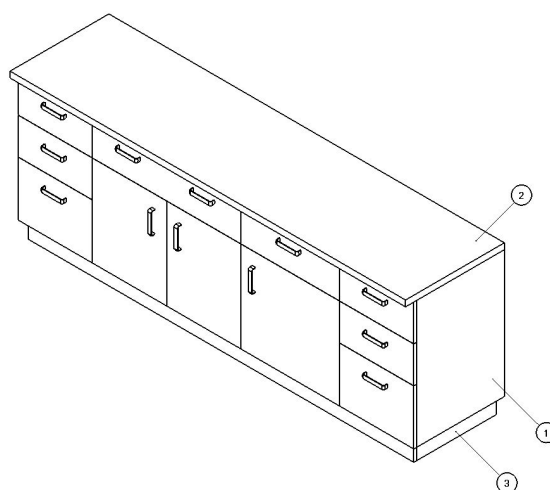
Forlab - Bottom cabinets

## BOTTOM CABINETS



- The tables bottom cabinets (204.02) together with corner cabinets (204.03) and sink cabinets (204.01) form a group, which allows flexibility in setting up working space with storage space.
- Thus assembled table is intended to laboratories, clean rooms, pharmacies, schools and wherever required equipment which meets all the requirements for appearance, function and durability, as well as the criteria for compliance with standards and security.
- The table consists of worktop, cabinets and transitions of cabinets to the floor.
- Assemblies of the tables can be completed with metal construction and the panel of type LSK for mediums.

### Sample assembly



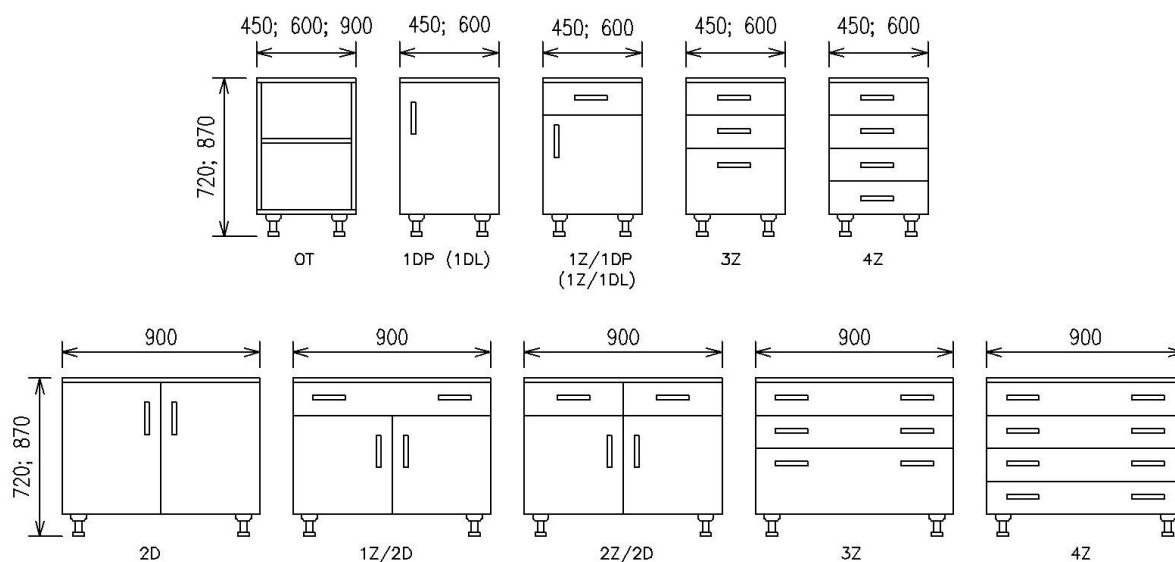
- 1 - Bottom cabinets for table assemblies, chapter 204.02  
2 - Table desk, chapter 205.01  
3 - Covering cabinets to the floor, chapter 204.04

## Forlab - Bottom cabinets

# BOTTOM CABINETS

## Variants of implementation:

- Standard depth of cabinets for assemblies is 550 mm



## Forlab - Bottom cabinets

## BOTTOM CABINETS

### S1: Type designation

204.02: Cabinets for table assembly

### S2: Material design

value	material
A: Standard	The cabinet is made of molded laminated panels
B: Standard plus	Body is made of molded laminated panels, fronts are made of high pressure laminate of standard performance
C: Premium	Body and fronts are made of metal sheets with a chemically resistant coating

### S3: Cabinet width

value	width
450: Cabinet width	450 mm
600: Cabinet width	600 mm
900: Cabinet width	900 mm

### S4: Cabinet height

value	height
750: Cabinet height	750 mm
900: Cabinet height	900 mm

### S5: Cabinet design

OT: Open cabinet

1DL: Cabinet with left-hand door

1DP: Cabinet with right door

1Z/1DL: One drawer, one left-hand door

1Z/1DP: One drawer, one right-hand door

1Z/2D: One drawer, double-door cabinet

2D: Double door cabinet

2Z/2D: Double-door cabinet with two drawers

3Z: Three drawer cabinet

4Z: Four drawer cabinet

### S6: Visible cabinet side

N: Sides of the cabinets are not visible.

PL: Left-hand side of the cabinet is visible.

PP: Right-hand side of the cabinet is visible.

PV: Right-hand and left-hand side of the cabinet is visible.

### S7: Cabinet lock - for extra charge

N: Cabinet without lock

ZC: Central lock (for x drawers)

ZJ: Simple lock (for doors and drawers)

## Forlab - Bottom cabinets

## BOTTOM CABINETS

### S8: Transition between cabinet and floor

BAS: The cabinet is formed on the basic profile. Height 50 mm.

SOK: The cabinet is formed on the basic legs and fitted with plinth. The height of 100 mm.

01NH: Basic leg with plinth. The height of 100 mm.

02NH: Basic plastic front leg. The height of 100 mm.

03NH: Basic aluminum leg. The height of 100 mm.

### S9: Handle

N: Without handles - always for variant of OT cabinet

U1: Standard handle circular with pitch of 128 mm.

U2: Standard handle oval with pitch of 128 mm.

### S10: Hardware

KSS: Standard

KST: With damping and buffer - for extra charge

N: Without hardware - Specification for open cabinet

### S11: Colour

BH001: The basic color for the material of the cabinets is STANDARD PLUS. Whole cabinet is in white colour.

BH002: The basic color for the material of the cabinets is STANDARD PLUS. Corpus white, gray fronts.

BH003: The basic color for the material of the cabinets is STANDARD PLUS. Corpus white, light blue fronts.

BH004: The basic color for the material of the cabinets is STANDARD PLUS. Corpus white, light green fronts.

BL001: The basic color for the material of the cabinets is STANDARD and PREMIUM . Whole cabinet is in white colour.

BL002: The basic color for the material of the cabinets is STANDARD and PREMIUM . Corpus white, gray fronts.

BL003: The basic color for the material of the cabinets is STANDARD and PREMIUM . Corpus white, blue fronts.

BL004: The basic color for the material of the cabinets is STANDARD and PREMIUM . Corpus white, green fronts.

BL005: The basic color for the material of the cabinets is STANDARD and PREMIUM . Corpus white, creamy-yellow fronts.

Bxxxx: Other than the basic colour of cabinets. The combination of colours in accordance with codes, see chapter Design.

### S12: Atypical - another solution in agreement with the trader

AT: Atypical finish - for extra charge

ST: Standard finish