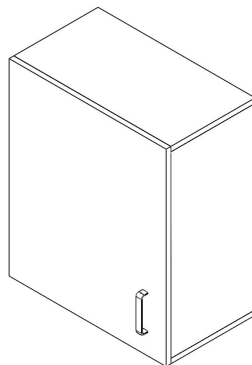


Forlab - Bearing elements

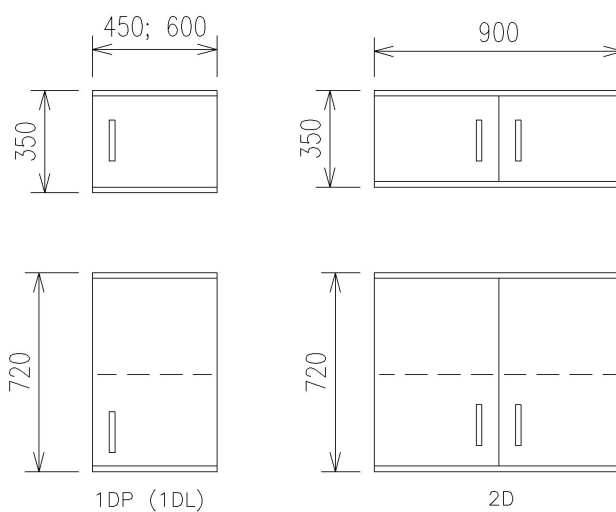
## EXTENSIONS OF TALL CABINETS



- Extensions of tall cabinets complement the Forlab system tall cabinets.

### Variants of implementation

- The standard cabinet depth is 450 or 600 mm.



Forlab - Bearing elements

## EXTENSIONS OF TALL CABINETS

### S1: Type designation

210.02: Extensions of tall cabinets

### S2: Material design

value	material
A: Standard	The cabinet is made of molded laminated panels
B: Standard plus	Body is made of molded laminated panels, fronts are made of high pressure laminate of standard performance
C: Premium	Body and fronts are made of metal sheets with a chemically resistant coating

### S3: Cabinet width

value	width
450: Cabinet width	450 mm
600: Cabinet width	600 mm
900: Cabinet width	900 mm

### S4: Cabinet depth

value	depth
450: Cabinet depth	450 mm
600: Cabinet depth	600 mm

### S5: Cabinet height

value	height
350: Cabinet height	350 mm
720: Cabinet height	720 mm

### S6: Cabinet design

1DL: Cabinet with solid left-hand door  
 1DP: Cabinet with solid right-hand door  
 2D: Cabinet with solid double wing door

### S7: Lock - for extra charge

N: Container without lock  
 ZJ: Simple lock for container's top drawer

### S8: Handle

U1: Standard handle circular with pitch of 128 mm.  
 U2: Standard handle oval with pitch of 128 mm.  
 U3: Standard handle oval with pitch of 160 mm.

### S9: Hardware

KSS: Standard  
 KST: With damping and buffer - additional cost

Forlab - Bearing elements

## EXTENSIONS OF TALL CABINETS

### S10: Colour

BH001: The basic color for the material of the cabinets is STANDARD PLUS. Whole cabinet is in white colour.
BH002: The basic color for the material of the cabinets is STANDARD PLUS. Corpus white, gray fronts.
BH003: The basic color for the material of the cabinets is STANDARD PLUS. Corpus white, light blue fronts.
BH004: The basic color for the material of the cabinets is STANDARD PLUS. Corpus white, light green fronts.
BL001: The basic color for the material of the cabinets is STANDARD and PREMIUM . Whole cabinet is in white colour.
BL002: The basic color for the material of the cabinets is STANDARD and PREMIUM . Corpus white, gray fronts.
BL003: The basic color for the material of the cabinets is STANDARD and PREMIUM . Corpus white, blue fronts.
BL004: The basic color for the material of the cabinets is STANDARD and PREMIUM . Corpus white, green fronts.
BL005: The basic color for the material of the cabinets is STANDARD and PREMIUM . Corpus white, creamy-yellow fronts.
Bxxxx: Other than the basic colour of cabinets. The combination of colours in accordance with codes, see chapter Design.

### S11: Atypical - another solution in agreement with the trader

AT: Atypical finish - for extra charge
ST: Standard finish