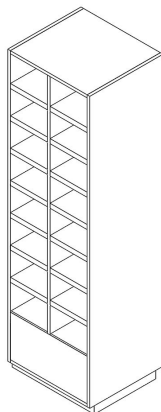
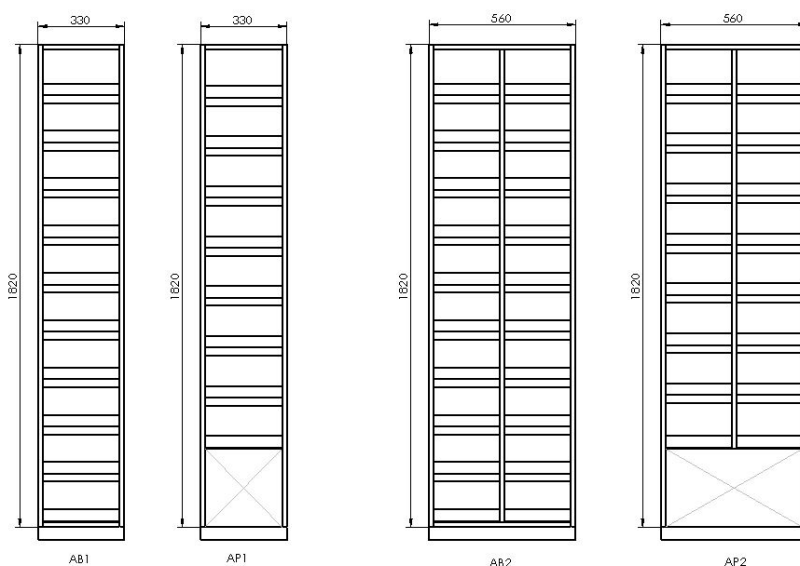


## PASS-THROUGH EQUIPMENT - CABINETS

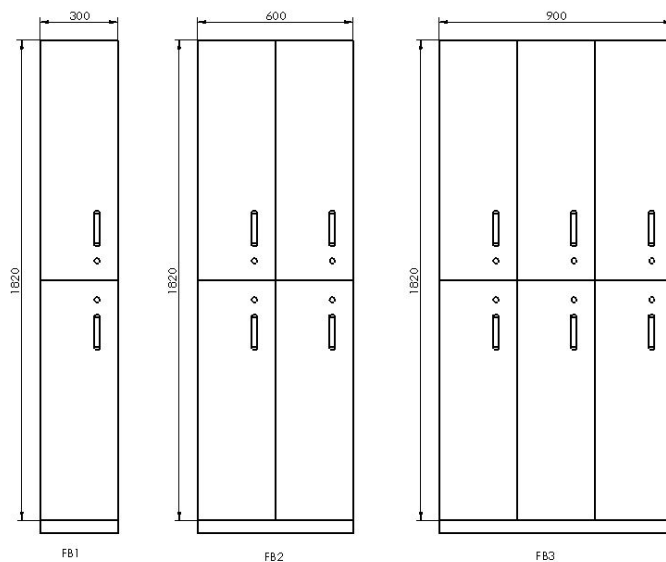


- A wide variety of laminate and partition panel cabinets meeting the most stringent requirements of the architect designing the pass-throughs. There is a choice of shoe cabinet, shelf cabinet, wardrobe and combined cabinet in exhausted and non-exhausted designs. Another frequently used element is cabinets featuring boxes.

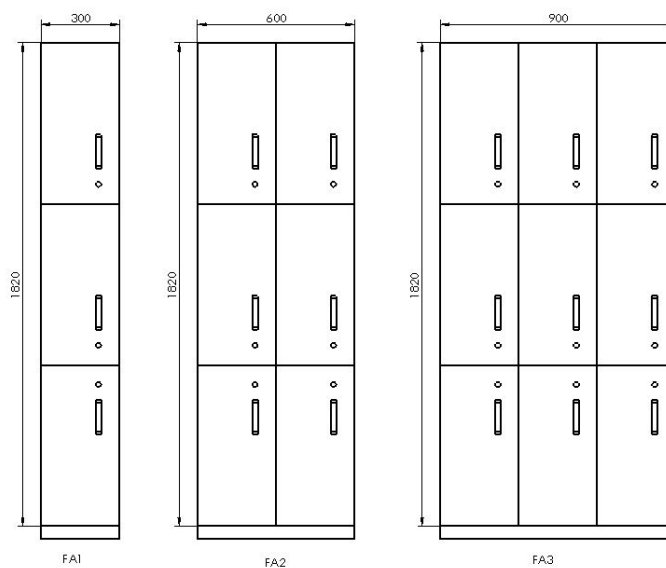


Open shoe cabinet, open shoe cabinet with adjacent bench

## PASS-THROUGH EQUIPMENT - CABINETS

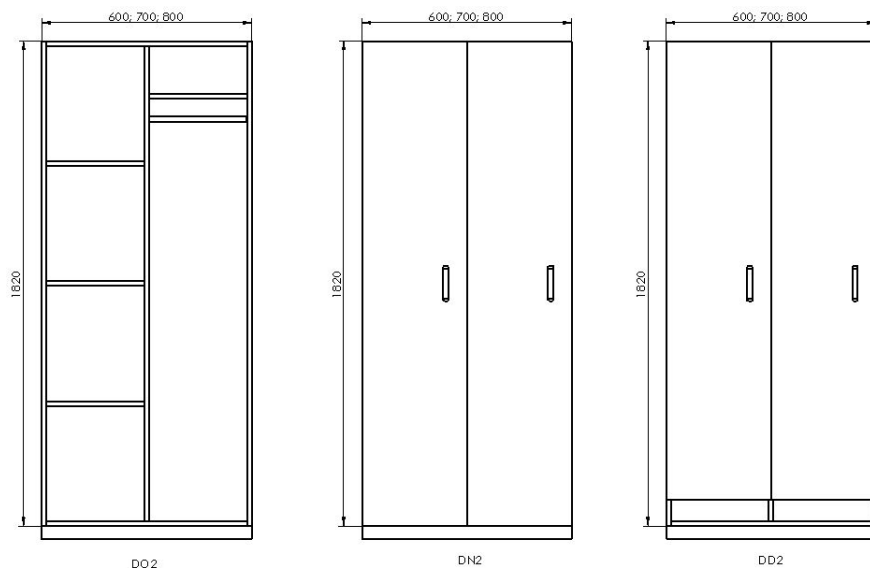


Two-piece boxes

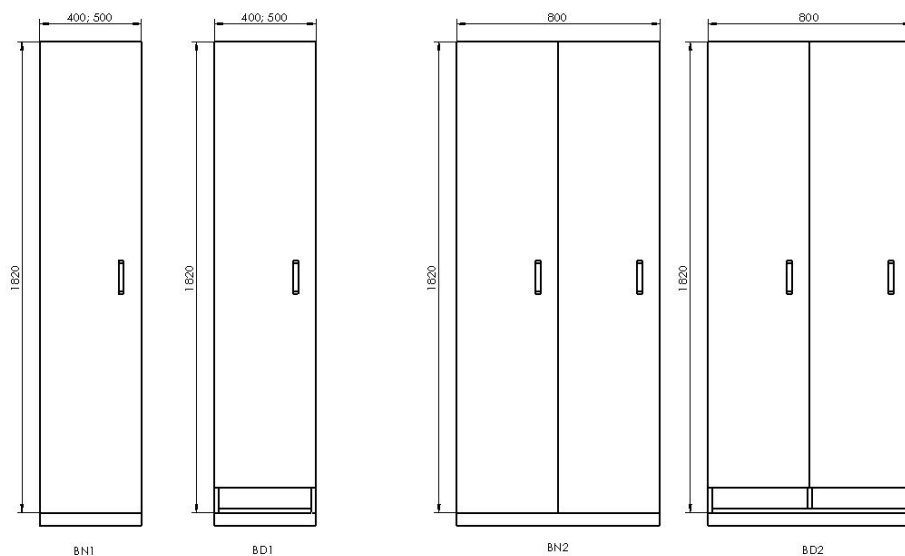


Three-piece boxes

## PASS-THROUGH EQUIPMENT - CABINETS

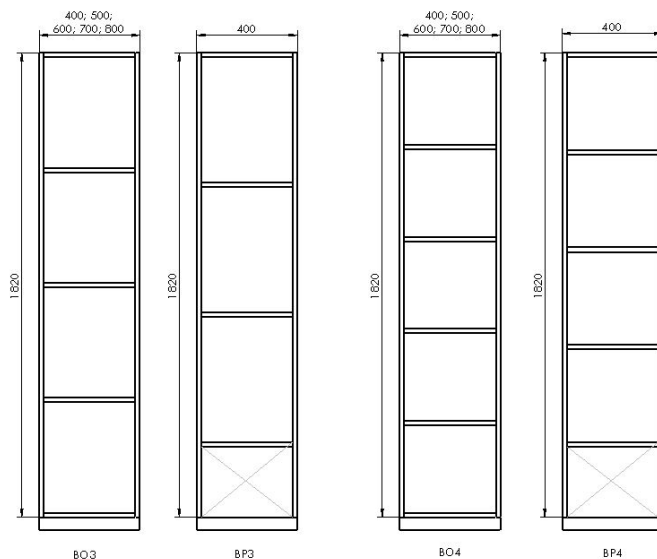


Combined cabinets, closed, ventilated

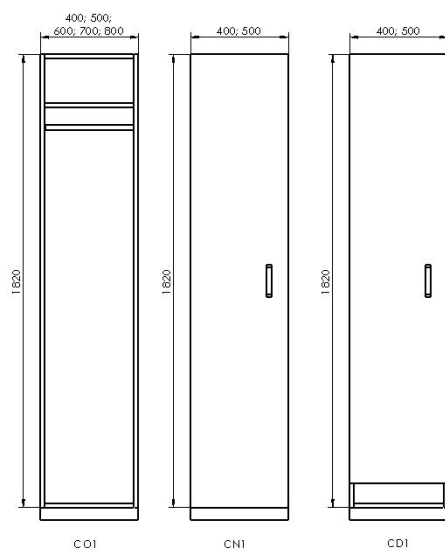


Shelf cabinet, closed, ventilated

## PASS-THROUGH EQUIPMENT - CABINETS

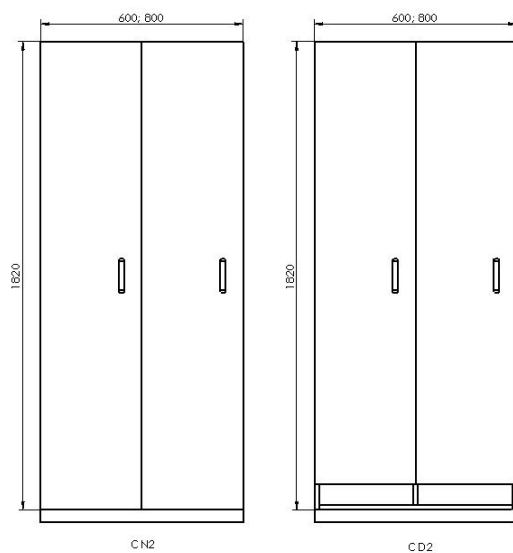


Open shelf cabinet, open shelf cabinet with adjacent bench

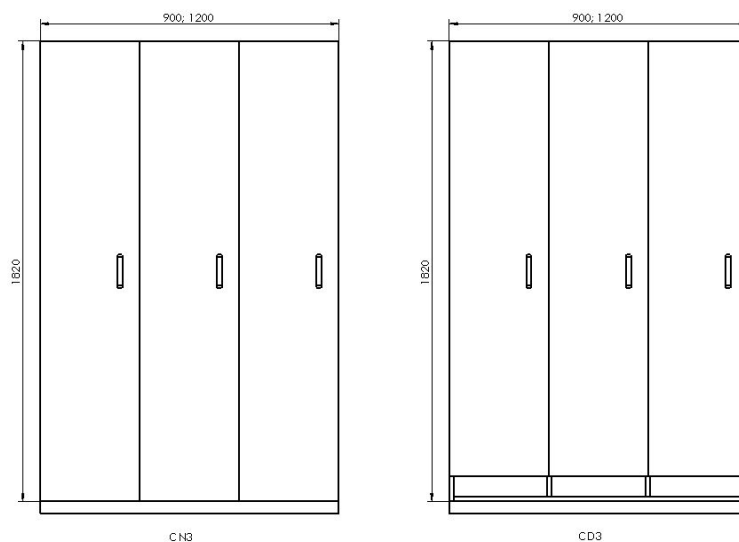


One-piece wardrobe, open, closed, ventilated

## PASS-THROUGH EQUIPMENT - CABINETS



Two-piece wardrobe, closed, ventilated



Three-piece wardrobe, closed, ventilated

## PASS-THROUGH EQUIPMENT - CABINETS

### S1: Type designation

216.01: Pass-through equipment - Cabinets

### S2: Design

**L: Pass-through made of laminated furniture**

**P: Pass-through made of partition panels**

### S3: Type of clean area transition

CB: From class C area to class B area

DC: From class D area to class C area

DD: From class D area to class D area

### S4: Type of cabinet

AB1: Shoe cabinet (10 pairs of shoes)

AB2: Shoe cabinet (10 pairs of shoes)

AP1: Shoe cabinet for bench mounting (8 pairs of shoes)

AP2: Shoe cabinet for bench mounting (10 pairs of shoes)

BD1: Exhausted closed shelf cabinet

BD2: Exhausted closed shelf cabinet, 2 sections

BN1: Non-exhausted closed shelf cabinet

BN2: Non-exhausted closed shelf cabinet, 2 sections

BO3: Open shelf cabinet with three shelves

BO4: Open shelf cabinet with four shelves

BP1: Shelf cabinet for shelf mounting

CD1: Exhausted closed wardrobe

CD2: Exhausted wardrobe, 2 sections

CD3: Exhausted wardrobe, 3 sections

CN1: Non-exhausted closed wardrobe

CN2: Non-exhausted wardrobe, 2 sections

CN3: Non-exhausted wardrobe, 3 sections

CO1: Open wardrobe

DD2: Combined wardrobe, closed, exhausted

DN2: Combined wardrobe, closed, non-exhausted

DO2: Combined wardrobe, open

FA1: 3 Boxes on top of each other, 1 section

FA2: 3 Boxes on top of each other, 2 sections

FA3: 3 Boxes on top of each other, 3 sections

FB1: 2 Boxes on top of each other, 1 section

FB2: 2 Boxes on top of each other, 2 sections

FB3: 2 Boxes on top of each other, 3 sections

## PASS-THROUGH EQUIPMENT - CABINETS

S5: Cabinet width		
value	width	intended for
0300: Cabinet width	300 mm	FA1, FB1
0330: Cabinet width	330 mm	AP1, AB1, AP2, AB2
0400: Cabinet width	400 mm	BP1, BO3, BO4, BN1, BD1, CO1, CN1, CD1
0500: Cabinet width	500 mm	BO3, BO4, BN1, BD1, CO1, CN1, CD1
0560: Cabinet width	560 mm	AP1, AB1, AP2, AB2
0600: Cabinet width	600 mm	BO3, BO4, CO1, DO2, DN2, DD2, CN2, CD2
0700: Cabinet width	700 mm	BO3, BO4, CO1, DO2, DN2, DD2
0800: Cabinet width	800 mm	BO3, BO4, BN2, BD2, CO1, DO2, DN2, DD2, CN2, CD2
0900: Cabinet width	900 mm	FA2, FB2, CN3, CD3
1200: Cabinet width	1200 mm	FA3, FB3, CN3, CD3

S6: Cabinet depth	
value	depth
500: Cabinet depth	500 mm
600: Cabinet depth	600 mm

S7: Cabinet height	
value	height
2000: Height of cabinet without plinth	2000 mm

S8: Door and shelf swing direction	
value	intended for
DL: Left-hand door for closed cabinets	BN1, BD, BN2, BD2, CN2, CD2, FA1,FB1,FA2,FB2, FA3,FB3
DP: Right-hand door for closed cabinets	BN1, BD, BN2, BD2, CN2, CD2, FA1,FB1,FA2,FB2, FA3,FB3
PL: Left-hand shelves for combined cabinets	DO2, DN2, DD2
PP: Right-hand shelves for combined cabinets	DO2, DN2, DD2
None for open cabinets	AP1, AB1, BP1, BO3, BO4

S9: Lock	
Z: Lock for closed cabinets	
Specification for open cabinets	

## PASS-THROUGH EQUIPMENT - CABINETS

### S10: Height of bottom opening for exhausted cabinets

value	height
Fill in this option for conventional cabinets	0 mm
050: Height of bottom opening for exhausted cabinets	50 mm
060: Height of bottom opening for exhausted cabinets	60 mm
070: Height of bottom opening for exhausted cabinets	70 mm
080: Height of bottom opening for exhausted cabinets	80 mm
090: Height of bottom opening for exhausted cabinets	90 mm
100: Height of bottom opening for exhausted cabinets	100 mm

### S11: Plinth 50 mm

BAS: Basic profile covered with floor covering. For new floor covering

KK: Metal surface with surface finish For existing floor covering

### S12 : Material

BILA: White laminate

### S13: ABS edge colour

BILA: White ABS edge