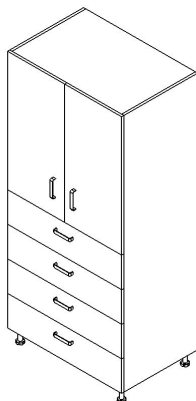


Forlab - Bearing elements

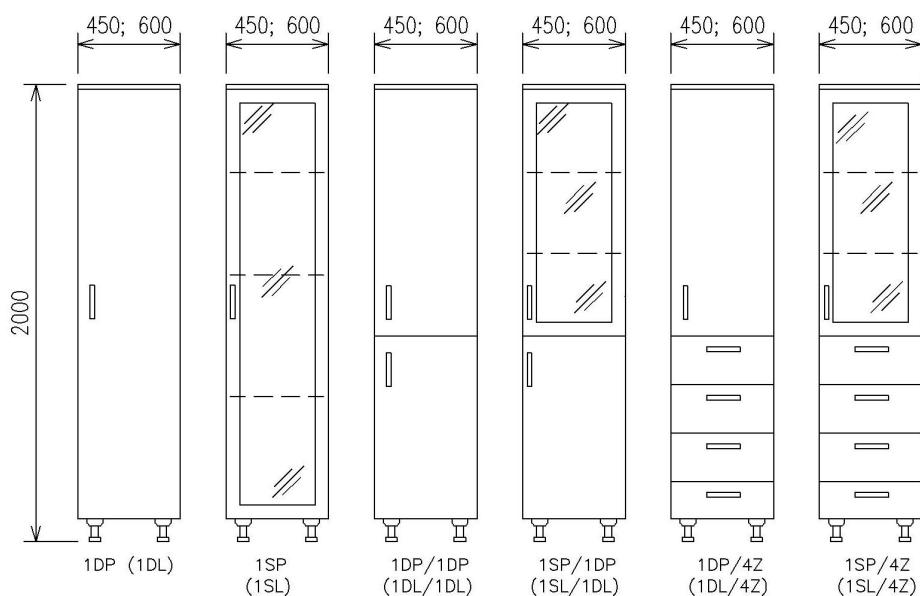
## TALL CABINETS AND MID-SIZE CABINETS



- Adds medium and tall cabinets to the Forlab system range.

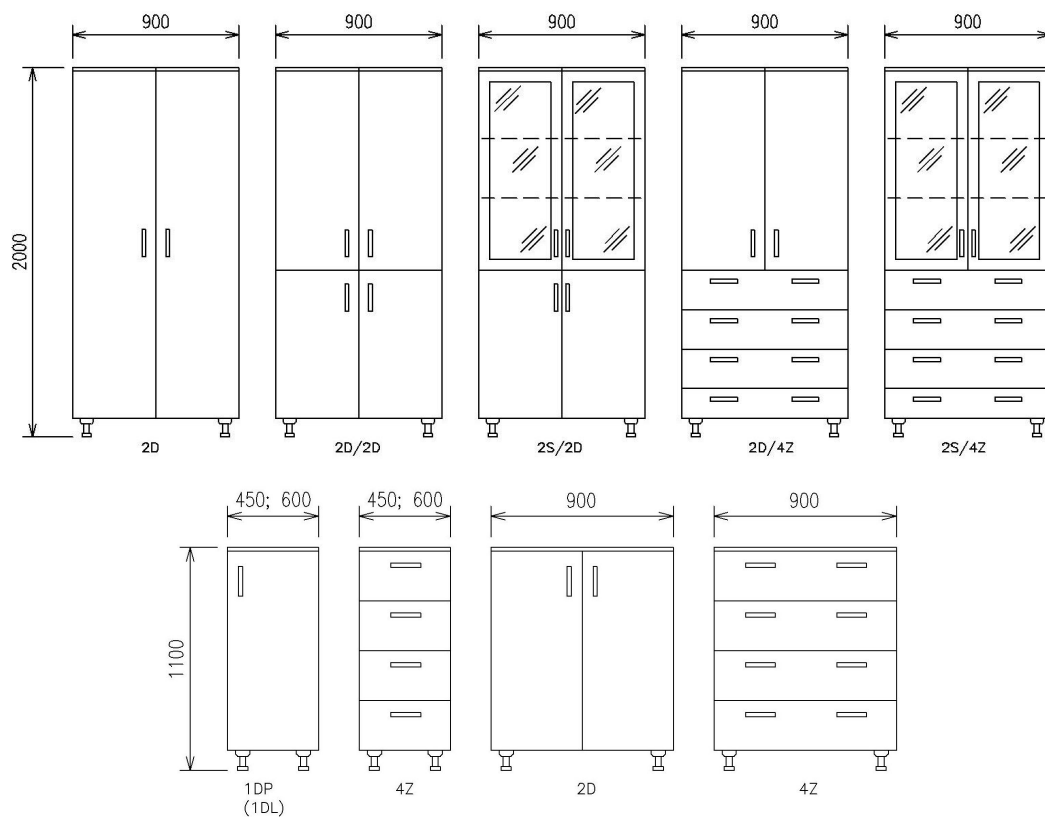
### Variants of implementation:

- The height of tall cabinets may be selected from two options (450 and 600 mm).



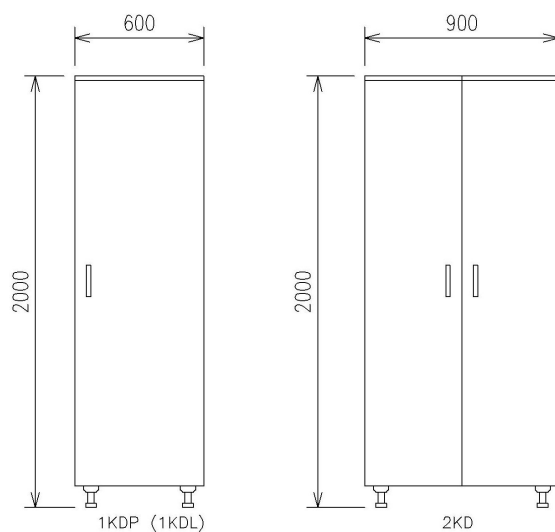
Forlab - Bearing elements

## TALL CABINETS AND MID-SIZE CABINETS



### Wardrobes

- 1 Shelf in the cabinet, bar for clothes under the shelf.



Forlab - Bearing elements

## TALL CABINETS AND MID-SIZE CABINETS

### S1: Type designation

210.01: Tall cabinets and mid-size cabinets

### S2: Material design

| value            | material   |
|------------------|--|
| A: Standard      | The cabinet is made of molded laminated panels   |
| B: Standard plus | Body is made of molded laminated panels, fronts are made of high pressure laminate of standard performance |
| C: Premium       | Body and fronts are made of metal sheets with a chemically resistant coating                               |

### S3: Cabinet width

| value              | width  |
|--------------------|--------|
| 450: Cabinet width | 450 mm |
| 600: Cabinet width | 600 mm |
| 900: Cabinet width | 900 mm |

### S4: Cabinet depth

| value              | depth  |
|--------------------|--------|
| 450: Cabinet depth | 450 mm |
| 600: Cabinet depth | 600 mm |

### S5: Cabinet height

| value                         | height  |
|-------------------------------|---------|
| 1100: Mid-size cabinet height | 1100 mm |
| 2000: Tall cabinet height     | 2000 mm |

Forlab - Bearing elements

## TALL CABINETS AND MID-SIZE CABINETS

### S6: Cabinet design

|   |
|---|
| 1DL: Narrow cabinet with solid left-hand door   |
| 1DL/1DL: Narrow divided cabinet with solid left-hand door                               |
| 1DL/4Z: Narrow combined cabinet with solid left-hand door and four drawers              |
| 1DP: Narrow cabinet with solid right-hand door  |
| 1DP/1DP: Narrow divided cabinet with solid right-hand door                              |
| 1DP/4Z: Narrow combined cabinet with solid right-hand door and four drawers             |
| 1KDL: Narrow wardrobe with left-hand door   |
| 1KDP: Narrow wardrobe with right-hand door  |
| 1SL: Narrow cabinet with glazed left-hand door  |
| 1SL/1DL: Narrow divided cabinet with glazed and solid left-hand doors                   |
| 1SL/4Z: Narrow combined cabinet with glazed door and four drawers                       |
| 1SP: Narrow cabinet with glazed right-hand door   |
| 1SP/1DP: Narrow divided cabinet with upper right-hand glazed door and lower solid door. |
| 1SP/4Z: Narrow combined cabinet with glazed right-hand door and four drawers            |
| 2D: Wide double door solid cabinet  |
| 2D/2D: Wide divided cabinet with two solid double wing doors                            |
| 2D/4Z: Wide combined cabinet with double wing door and four drawers                     |
| 2KD: Double wing wardrobe   |
| 2S/2D: Wide combined cabinet with glazed double wing door and solid double wing door    |
| 2S/4Z: Wide combined cabinet with glazed double wing door and four drawers              |

### S7: Lock - for extra charge

|   |
|---|
| ZC: Central lock (for x drawers)                                |
| ZJ: Simple lock (for narrow door cabinets and the first drawer) |
| ZR: Multipoint lock (for tall double-wing cabinets)             |
| Z1S: Lock for glass doors                                       |
| Z2S: Lock for glass double wing doors                           |

### S8: Cabinet end on the floor

|  |
|--|
| BAS: The cabinet is formed on the basic profile. Height 50 mm.                             |
| SOK: The cabinet is formed on the basic legs and fitted with plinth. The height of 100 mm. |
| 01NH: Basic leg with plinth. The height of 100 mm.   |
| 02NH: Basic plastic front leg. The height of 100 mm.                                       |
| 03NH: Basic aluminum leg. The height of 100 mm.  |
| 04NH: Aluminum leg - for extra charge. The height of 100 mm.                               |
| 05NH: Plastic leg - for extra charge. The height of 100 mm.                                |

### S9: Handle

|  |
|--|
| U1: Standard handle circular with pitch of 128 mm. |
| U2: Standard handle oval with pitch of 128 mm.     |
| U3: Standard handle oval with pitch of 160 mm.     |

Forlab - Bearing elements

## TALL CABINETS AND MID-SIZE CABINETS

### S10: Hardware

KSS: Standard

KST: With damping and buffer - for extra charge

### S11: Colour

BH001: The basic color for the material of the cabinets is STANDARD PLUS. Whole cabinet is in white colour.

BH002: The basic color for the material of the cabinets is STANDARD PLUS. Corpus white, gray fronts.

BH003: The basic color for the material of the cabinets is STANDARD PLUS. Corpus white, light blue fronts.

BH004: The basic color for the material of the cabinets is STANDARD PLUS. Corpus white, light green fronts.

BL001: The basic color for the material of the cabinets is STANDARD and PREMIUM . Whole cabinet is in white colour.

BL002: The basic color for the material of the cabinets is STANDARD and PREMIUM . Corpus white, gray fronts.

BL003: The basic color for the material of the cabinets is STANDARD and PREMIUM . Corpus white, blue fronts.

BL004: The basic color for the material of the cabinets is STANDARD and PREMIUM . Corpus white, green fronts.

BL005: The basic color for the material of the cabinets is STANDARD and PREMIUM . Corpus white, creamy-yellow fronts.

Bxxxx: Other than the basic colour of cabinets. The combination of colours in accordance with codes, see chapter Design.

### S12: Atypical - another solution in agreement with the trader

AT: Atypical finish - for extra charge

ST: Standard finish