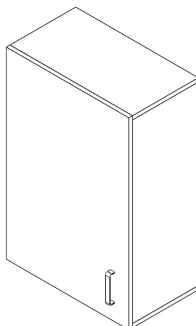


Forlab - Upper wall-mounted cabinet

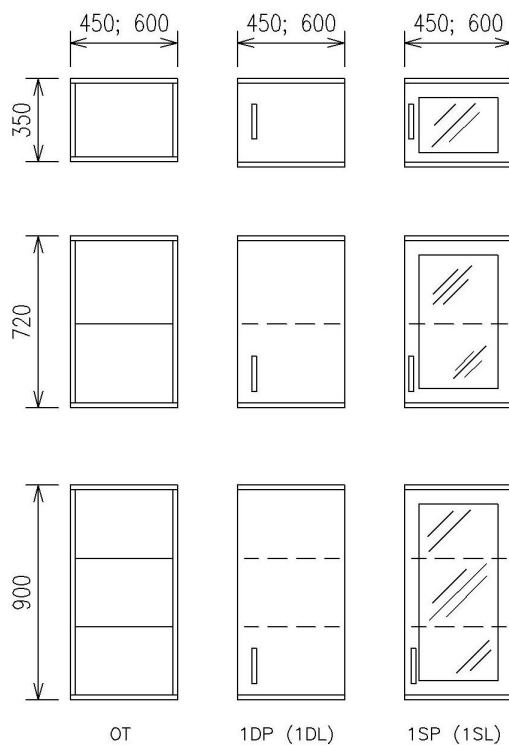
## UPPER WALL-MOUNTED CABINET



- Wall-mounted upper cabinets complement the Forlab system with above-the-worktop storage space.
- The cabinets are designed to be installed on the wall.
- For cabinets with glass door, the glass is mounted on an aluminum frame.

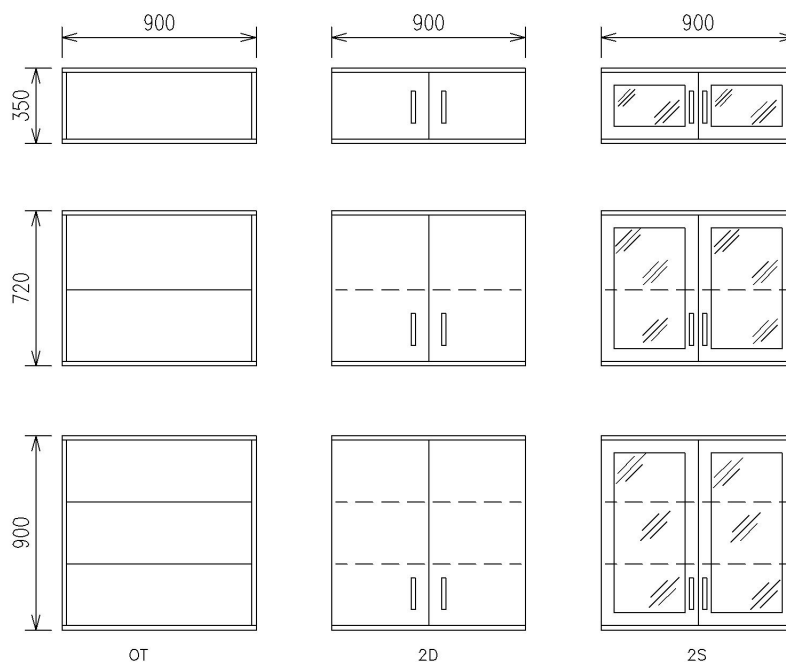
### Cabinet design

- The standard cabinet depth is 340 mm.



Forlab - Upper wall-mounted cabinet

## UPPER WALL-MOUNTED CABINET



Forlab - Upper wall-mounted cabinet

## UPPER WALL-MOUNTED CABINET

### S1: Type designation

209.01: Wall-mounted upper cabinets

### S2: Material design

value	material
A: Standard	The cabinet is made of molded laminated panels
B: Standard plus	Body is made of molded laminated panels, fronts are made of high pressure laminate of standard performance
C: Premium	Body and fronts are made of metal sheets with a chemically resistant coating

### S3: Cabinet width

value	width
450: Cabinet width	450 mm
600: Cabinet width	600 mm
900: Cabinet width	900 mm

### S4: Cabinet height

value	height
350: Cabinet height	350 mm
720: Cabinet height	720 mm
900: Cabinet height	900 mm

### S5: Cabinet design

OT: Open cabinet

1DL: Cabinet with solid left-hand door

1DP: Cabinet with solid right-hand door

1SL: Cabinet with glazed left-hand door

1SP: Cabinet with glazed right-hand door

2D: Cabinet with solid double wing door

2S: Cabinet with glazed double wing door

### S6: Cabinet lock

N: Cabinet without lock

ZC: Central lock (for x drawers)

ZJ: Simple lock (for doors and drawers)

Z1S: Lock for glass doors

Z2S: Lock for glass double wing doors

### S7: Handle

N: Without handles - always for variant of OT cabinet

U1: Standard handle circular with pitch of 128 mm.

U2: Standard handle oval with pitch of 128 mm.

Forlab - Upper wall-mounted cabinet

## UPPER WALL-MOUNTED CABINET

### S8: Hardware

KSS: Standard

KST: With damping and buffer - additional cost

N: Without hardware - Specification for open cabinet

### S9: Colour

BH001: The basic color for the material of the cabinets is STANDARD PLUS. Whole cabinet is in white colour.

BH002: The basic color for the material of the cabinets is STANDARD PLUS. Corpus white, gray fronts.

BH003: The basic color for the material of the cabinets is STANDARD PLUS. Corpus white, light blue fronts.

BH004: The basic color for the material of the cabinets is STANDARD PLUS. Corpus white, light green fronts.

BL001: The basic color for the material of the cabinets is STANDARD and PREMIUM . Whole cabinet is in white colour.

BL002: The basic color for the material of the cabinets is STANDARD and PREMIUM . Corpus white, gray fronts.

BL003: The basic color for the material of the cabinets is STANDARD and PREMIUM . Corpus white, blue fronts.

BL004: The basic color for the material of the cabinets is STANDARD and PREMIUM . Corpus white, green fronts.

BL005: The basic color for the material of the cabinets is STANDARD and PREMIUM . Corpus white, creamy-yellow fronts.

Bxxxx: Other than the basic colour of cabinets. The combination of colours in accordance with codes, see chapter Design.

### S10: Atypical - another solution in agreement with the trader

AT: Atypical finish - for extra charge

ST: Standard finish